



2024 CATALOG

MISSION STATEMENT

To meet our customers' requirements and *exceed* their expectations with personalized service and the highest level of customers' satisfaction, while *continually improving* our processes, capabilities, and performance.

WHAT QSPAC IS ALL ABOUT...

Quality

Service

People

Accountability

Communication

The QSPAC logo is mounted on a light-colored building facade. The 'Q' is a large, stylized green letter, and 'SPAC' is in a bold, dark grey sans-serif font. The background shows some foliage and a clear sky.

QSPAC

QSPAC is here to serve you, our valued distributor.

In-house custom printing and slitting of tapes.



Local shipping in Southern California is a breeze with Q-Trucks that are loaded with your orders every day!

CONTENTS

Carton Sealing Tapes	5
Custom Printed Tapes12
Industrial Tapes14
Print Wiz22
Tape Dispensers24
Stretch Film27
Shrink Film.34
Reloc Zippit [®] Bags36
Thermal Transfer & Direct Thermal Labels.38
Fragile Labels39
Packing List Envelopes40
Strapping Tools42
Knives & Blades43
Impulse Sealers44
Notes45
Line Card47

CARTON SEALING TAPE

MIGHTY TAC

Acrylic Adhesive

Medium Grade - 1.8 mil thickness - Hand Application

Product Number	Size	Color	Case Weight	Rolls/Case	
AP818	48 mm x 100 M	2" x 110 yds	Clear	19 lbs	36
AP818	48 mm x 100 M	2" x 110 yds	Tan	19 lbs	36
AP818	72 mm x 100 M	3" x 110 yds	Clear	19 lbs	24
AP818	72 mm x 100 M	3" x 110 yds	Tan	19 lbs	24

Medium Grade - 1.8 mil thickness - Machine Application

Product Number	Size	Color	Case Weight	Rolls/Case	
AP818	48 mm x 914 M	2" x 1000 yds	Clear	27 lbs	6
AP818	72 mm x 914 M	3" x 1000 yds	Clear	27 lbs	4

Performance Grade - 2.0 mil thickness - Hand Application

Product Number	Size	Color	Case Weight	Rolls/Case	
AP820	48 mm x 100 M	2" x 110 yds	Clear	21 lbs	36
AP820	48 mm x 100 M	2" x 110 yds	Tan	21 lbs	36
AP820	72 mm x 100 M	3" x 110 yds	Clear	21 lbs	24
AP820	72 mm x 100 M	3" x 110 yds	Tan	21 lbs	24

Performance Grade - 2.0 mil thickness - Machine Application

Product Number	Size	Color	Case Weight	Rolls/Case	
AP820	48 mm x 914 M	2" x 1000 yds	Clear	30 lbs	6
AP820	72 mm x 914 M	3" x 1000 yds	Clear	30 lbs	4

Acrylic - Heavy Duty Grade - 2.6 mil thickness - Hand Application

Product Number	Size	Color	Case Weight	Rolls/Case	
AP826	48 mm x 100 M	2" x 110 yds	Clear	26 lbs	36
AP826	72 mm x 100 M	3" x 110 yds	Clear	26 lbs	24

- Quality adhesive at a great price
- Hand sealing of lightweight to heavy duty cartons
- High clarity
- Premium aging characteristics
- Long shelf life



CARTON SEALING TAPE

PREMIUM GRADE - ACRYLIC

Light Grade - 1.6 mil thickness - Hand Application

Product Number	Size	Color	Case Weight	Rolls/Case	
PA816	48 mm x 100 M	2" x 110 yds	Clear	17 lbs	36
PA816	48 mm x 100 M	2" x 110 yds	Tan	17 lbs	36
PA816	72 mm x 100 M	3" x 110 yds	Clear	17 lbs	24

Cross Reference: **Shurtape AP-101, IPG 261**

Medium Grade - 1.8 mil thickness - Hand Application

Product Number	Size	Color	Case Weight	Rolls/Case	
PA818	48 mm x 50 M	2" x 55 yds	Clear	11 lbs	36
PA818	48 mm x 100 M	2" x 110 yds	Clear	19 lbs	36
PA818	48 mm x 100 M	2" x 110 yds	Tan	19 lbs	36
PA818	72 mm x 100 M	3" x 110 yds	Clear	19 lbs	24
PA818	72 mm x 100 M	3" x 110 yds	Tan	19 lbs	24

Medium Grade - 1.8 mil thickness - Machine Application

Product Number	Size	Color	Case Weight	Rolls/Case	
PA818	48 mm x 914 M	2" x 1000 yds	Clear	27 lbs	6
PA818	48 mm x 1371 M	2" x 1500 yds	Clear	40 lbs	6
PA818	48 mm x 1828 M	2" x 2000 yds	Clear	51 lbs	6
PA818	72 mm x 914 M	3" x 1000 yds	Clear	27 lbs	4
PA818	72 mm x 914 M	3" x 1000 yds	Tan	27 lbs	4

Cross Reference: **3M 305, Shurtape AP-180, IPG 300**

Performance Grade - 2.0 mil thickness - Hand Application

Product Number	Size	Color	Case Weight	Rolls/Case	
PA820	48 mm x 50 M	2" x 55 yds	Clear	12 lbs	36
PA820	48 mm x 100 M	2" x 110 yds	Clear	21 lbs	36
PA820	48 mm x 100 M	2" x 110 yds	Tan	21 lbs	36
PA820	72 mm x 100 M	3" x 110 yds	Clear	21 lbs	24
PA820	72 mm x 100 M	3" x 110 yds	Tan	21 lbs	24

Performance Grade - 2.0 mil thickness - Machine Application

Product Number	Size	Color	Case Weight	Rolls/Case	
PA820	48 mm x 914 M	2" x 1000 yds	Clear	30 lbs	6
PA820	48 mm x 914 M	2" x 1000 yds	Tan	30 lbs	6
PA820	48 mm x 1371 M	2" x 1500 yds	Clear	42 lbs	6
PA820	72 mm x 914 M	3" x 1000 yds	Clear	30 lbs	4
PA820	72 mm x 914 M	3" x 1000 yds	Tan	30 lbs	4

Cross Reference: **3M 311, Shurtape AP-201, IPG 400**

- Ideal for closure of lightweight to heavy duty cartons
- High performance adhesive
- High initial tack
- Cold temperature application
- Strong peel adhesion
- Premium quality film
- Long shelf life
- Low odor



CARTON SEALING TAPE

PREMIUM GRADE - ACRYLIC

High Performance Grade - 2.6 mil thickness - Hand Application

Product Number	Size	Color	Case Weight	Rolls/Case	
PA826	48 mm x 100 M	2" x 110 yds	Clear	26 lbs	36
PA826	72 mm x 100 M	3" x 110 yds	Clear	26 lbs	24

Cross Reference: **3M** 313, **Shurtape** 401, **IPG** 291

High Performance Grade - 3.0 mil thickness - Hand Application

Product Number	Size	Color	Case Weight	Rolls/Case	
PA830	48 mm x 50 M	2" x 55 yds	Clear	17 lbs	36
PA830	72 mm x 50 M	3" x 55 yds	Clear	17 lbs	24

Cross Reference: **IPG** 341

High Performance Grade - 3.6 mil thickness - Hand Application

Product Number	Size	Color	Case Weight	Rolls/Case	
PA836	48 mm x 50 M	2" x 55 yds	Clear	19 lbs	36
PA836	72 mm x 50 M	3" x 55 yds	Clear	19 lbs	24

Cross Reference: **3M** 315

- Ideal for closure of high density and high value cartons
- High performance adhesive
- High initial tack
- Cold temperature application
- Strong peel adhesion
- Premium quality film
- Long shelf life
- Low odor

Colored Acrylic Adhesive

Performance Grade - 2.0 mil thickness - Hand Application

Product Number	Size	Case Weight	Rolls/Case	
PA82C	48 mm x 100 M	2" x 110 yds	21 lbs	36
PA82C	72 mm x 100 M	3" x 110 yds	21 lbs	24

Performance Grade - 2.0 mil thickness - Machine Application

Product Number	Size	Case Weight	Rolls/Case	
PA82C	48 mm x 914 M	2" x 1000 yds	30 lbs	6
PA82C	72 mm x 914 M	3" x 1000 yds	30 lbs	4

Available in blue, green, orange, red, yellow, & white.

Cross Reference: **Shurtape** AP-201, **IPG** 321



Features:

- Performance grade
- Premium Acrylic Adhesive
- 2.0 mil thickness
- Hand rolls and Machine rolls
- Available in 2" and 3"

Benefits:

- Color coding boxes
- Identify date of inventory, warehouse location & products

CARTON SEALING TAPE

PREMIUM GRADE - HOT MELT / NATURAL RUBBER



Premium Grade Hot Melt

Light Grade - 1.6 mil thickness - Hand Application

Product Number	Size	Color	Case Weight	Rolls/Case	
PH816	48 mm x 50 M	2" x 55 yds	Clear	11 lbs	36
PH816	48 mm x 50 M	2" x 55 yds	Tan	11 lbs	36
PH816	48 mm x 100 M	2" x 110 yds	Clear	17 lbs	36
PH816	48 mm x 100 M	2" x 110 yds	Tan	17 lbs	36
PH816	72 mm x 100 M	3" x 110 yds	Clear	17 lbs	24

- Ideal for closure of lightweight boxes
- Short term use
- Aggressive tack and instant adhesion

Light Grade - 1.6 mil thickness - Machine Application

Product Number	Size	Color	Case Weight	Rolls/Case	
PH816	48 mm x 914 M	2" x 1000 yds	Clear	26 lbs	6
PH816	48 mm x 1371 M	2" x 1500 yds	Clear	39 lbs	6

Cross Reference: *Shurtape* HP-100, *3M* 369, *IPG* 6100

Performance Grade - 1.9 mil thickness - Hand Application

Product Number	Size	Color	Case Weight	Rolls/Case	
PH819	48 mm x 50 M	2" x 55 yds	Clear	11 lbs	36
PH819	48 mm x 50 M	2" x 55 yds	Tan	11 lbs	36
PH819	48 mm x 100 M	2" x 110 yds	Clear	19 lbs	36
PH819	48 mm x 100 M	2" x 110 yds	Tan	19 lbs	36
PH819	72 mm x 100 M	3" x 110 yds	Clear	19 lbs	24
PH819	72 mm x 100 M	3" x 110 yds	Tan	19 lbs	24

- Ideal for closure of medium weight boxes
- Aggressive tack and instant adhesion

Performance Grade - 1.9 mil thickness - Machine Application

Product Number	Size	Color	Case Weight	Rolls/Case	
PH819	48 mm x 914 M	2" x 1000 yds	Clear	30 lbs	6
PH819	48 mm x 1371 M	2" x 1500 yds	Clear	40 lbs	6
PH819	48 mm x 1828 M	2" x 2000 yds	Clear	51 lbs	6
PH819	72 mm x 914 M	3" x 1000 yds	Clear	30 lbs	4

Cross Reference: *Shurtape* HP-200, *3M* 371, *IPG* 7100

High Performance Grade - 2.5 mil thickness - Hand Application

Product Number	Size	Color	Case Weight	Rolls/Case	
PH825	48 mm x 100 M	2" x 110 yds	Clear	26 lbs	36
PH825	72 mm x 100 M	3" x 110 yds	Clear	26 lbs	24

Cross Reference: *Shurtape* HP-400, *3M* 373, *IPG* 9100

- Ideal for closure of high density and high value cartons
- Aggressive tack and instant adhesion

Natural Rubber Adhesive

High Performance Grade - 2.0 mil thickness - Hand Application

Product Number	Size	Color	Case Weight	Rolls/Case	
PN820	48 mm x 100 M	2" x 110 yds	Clear	21 lbs	36
PN820	72 mm x 100 M	3" x 110 yds	Clear	21 lbs	24



- Adheres to recycled, used, dusty, and dirty corrugated surfaces
- Withstands extreme hot or cold temperatures

CARTON SEALING TAPE

MISCELLANEOUS

STATIONERY TAPE

Hand or Dispenser Application

Product Number	Size	Color	Case Weight	Rolls/Case	
SA818	12 mm x 66 M	½" x 72 yds	Clear	7 lbs	72
SA818	18 mm x 66 M	¾" x 72 yds	Clear	7 lbs	48
SA818	24 mm x 66 M	1" x 72 yds	Clear	7 lbs	36

*For use with dispenser QPC-135

Cross Reference: **3M** 600

- Water-based acrylic adhesive
- 1.8 mil thickness
- 20 lbs. tensile strength

QPC-135
(page 25)



LABEL PROTECTION TAPE

Dispenser Application

Product Number	Size	Color	Case Weight	Rolls/Case	
SA816	96 mm x 66 M	4" x 72 yds	Clear	12 lbs	18
SA816	144 mm x 66 M	6" x 72 yds	Clear	12 lbs	12

*For use with 4" dispensers QPC-400 & QPC-400M and 6" dispensers QPC-600 & QPC-600M

Cross Reference: **ULINE** S-216, **ULINE** S-616, **Shurtape** AP015

- Used for securing labels and documents to box
- Non-yellowing acrylic adhesive
- 1.6 mil thickness

QPC-600M
(page 25)



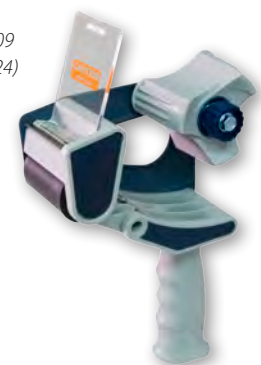
SUPER ROLL

Product Number	Size	Color	Case Weight	Rolls/Case	
AG818	12 mm x 183 M	½" x 200 yds	Clear	35 lbs	144
AG818	18 mm x 183 M	¾" x 200 yds	Clear	35 lbs	96
AG818	24 mm x 183 M	1" x 200 yds	Clear	35 lbs	72
AG818	36 mm x 183 M	1 ½" x 200 yds	Clear	35 lbs	48
AG818	48 mm x 183 M	2" x 200 yds	Clear	35 lbs	36

*For use with dispenser QPC-209

- Water-based acrylic adhesive
- Hand sealing of medium weight cartons
- High clarity, premium aging characteristics and long shelf life
- 1.8 mil thickness

QPC-209
(page 24)



CARTON SEALING TAPE

STOCK PRINTED SECURITY TAPES

Acrylic Adhesive - "Fragile" - Hand Rolls - 2.0 mil

Product Number	Size	Color	Case Weight	Rolls/Case
PS820FRGL1-RD/WT	48 mm x 100 M 2" x 110 yds	Red on White	19 lbs	36



- Custom printed security tape available
- Informs handlers of care
- Stop theft of valuable products

Acrylic Adhesive - "Stop - If Seal is Broken" - Hand Rolls - 2.0 mil

Product Number	Size	Color	Case Weight	Rolls/Case
PS820STOP1-RD/WT	48 mm x 100 M 2" x 110 yds	Red on White	19 lbs	36
PS820STOP4-RD/WT	72 mm x 100 M 3" x 110 yds	Red on White	19 lbs	24
PS820STOP1-RD/CL	48 mm x 100 M 2" x 110 yds	Red on Clear	19 lbs	36
PS820STOP4-RD/CL	72 mm x 100 M 3" x 110 yds	Red on Clear	19 lbs	24
PS820STOP4-RD/TN	72 mm x 100 M 3" x 110 yds	Red on Tan	19 lbs	24
PS820STOP6-RD/WT	48 mm x 100 M 2" x 110 yds	Red on White - Striped	19 lbs	36



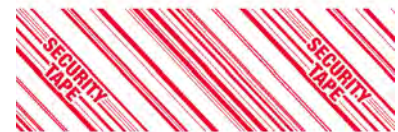
Above: PS820STOP1-RD/WT



Above: PS820STOP2-RD/WT

Acrylic Adhesive - "Security Tape" - Hand Rolls - 2.0 mil

Product Number	Size	Color	Case Weight	Rolls/Case
PS820-SEC-BK/WT	72 mm x 100 M 3" x 110 yds	Black on White	19 lbs	24
PS820-SEC-RD/WT	72 mm x 100 M 3" x 110 yds	Red on White	19 lbs	24



Water Activated Gum Security Paper Tape

Product Number	Size	Color	Case Weight	Rolls/Case
PS658-FRAGILE-RD/KF	72mm x 450'	Kraft	31 lbs	10
PS658-WARNING-RD/KF	72mm x 450'	Kraft	31 lbs	10



CARTON SEALING TAPE

PAPER TAPES

Flatback (Pressure Sensitive)

Product Number	Size	Color	Case Weight	Rolls/Case	
FB160	48 mm x 55 M	2" x 60 yds	Kraft	20 lbs	24
FB160	72 mm x 55 M	3" x 60 yds	Kraft	20 lbs	16

Cross Reference: **Shurtape FP-97**

Flatback paper tape is a 6.0 mil general purpose grade paper tape used for hand carton sealing, as well as splicing and general purpose packaging, binding, holding, tabbing, reinforcing, banding and patching. Constructed with an aggressive adhesive that offers excellent holding power. FDA approved for indirect food contact.



WATER ACTIVATED PAPER TAPES

Holland Non-Reinforced

Product Number	Size	Color	Case Weight	Rolls/Case
GT652-183TN	3" x 600 ft	Kraft (60#)	31 lbs	10

Cross Reference: **IPG #160**

Hydro Medium Duty - Gum Reinforced

Product Number	Size	Color	Case Weight	Rolls/Case
GT654-137TN	70 mm x 450 ft	Kraft (Medium Duty)	32 lbs	10
GT654-137WT	70 mm x 450 ft	#3 White (Medium Duty)	32 lbs	10

Cross Reference: **IPG #233**



Holland Medium Duty - Gum Reinforced

Product Number	Size	Color	Case Weight	Rolls/Case
GT655-114TN	70 mm x 375 ft	Kraft (Medium Duty)	20 lbs	8
GT655-137TN	70 mm x 450 ft	Kraft (Medium Duty)	28 lbs	10
GT655-137WT	72 mm x 450 ft	#1 White (Medium Duty)	30 lbs	10

Cross Reference: **IPG #235**

Holland Heavy Duty - Gum Reinforced

Product Number	Size	Color	Case Weight	Rolls/Case
GT675-137TN	3" x 450 ft	Kraft (Heavy Duty)	35 lbs	10

Cross Reference: **IPG #260**



Manual: QPC-PX-M1



Electronic: QPC-PX-E1

QSPAC is the authorized West Coast distributor for Phoenix Tape Dispensers. More information on these dispensers can be found on page 26.

CARTON SEALING TAPE

CUSTOM PRINTED TAPE - SURFACE PRINT

Surface Printed Tapes

Your design will be printed on the surface of the tape. Here are some benefits of surface printing:

- Short lead times
- Competitive pricing
- Printing up to 3 colors in-house
- Small quantities for minimum orders (as little as 2 cases)
- Quality tape printed in North America
- Proofs completed within 24 hours of receipt of camera ready artwork
- In-house Graphic Design to assist with artwork



Hot Melt Carton Sealing Tape

- Clear, Tan and White
- Printed up to 3 colors
- 1.9 mil, 2.5 mil, 3.0 mil



Acrylic Carton Sealing Tape

- Clear, Tan and White
- Printed up to 3 colors
- 2.0 mil, 2.6 mil, 3.0 mil



Reinforced Paper Tape

- Kraft and White
- Printed up to 3 colors
- Regular and heavy duty



Non-Reinforced Paper Tape

- Kraft and White
- Printed up to 3 colors



PVC Tape

- Printed up to 3 colors
- Clear, White, and Tan (2.2 mil)
- Red, Light Blue, Green, Orange, Yellow (2.4 mil)



Features & Benefits of Custom Printed Tapes:

- Advertisement
- Reduce pilferage
- Identification
- Special instructions
- Reduced printed carton cost
- Tracking
- Repeat orders
- Create good will



FULL COLOR DIGITAL PRINTED PAPER TAPE



FULL COLOR DIGITAL PRINTING ON OUR KRAFT AND WHITE PAPER TAPE

* Picturesque 4 color
process print

* Photo realistic print
quality (Minimum 300DPI)

* Unlimited possibilities.
If you can design it,
we can print it!

* Seamless printing with
no repeat lines

* Quick turnaround

* No tooling or color
match fees

INDUSTRIAL TAPES

STRAPPING & FILAMENT

The MOPP (mono-axially oriented polypropylene) film tape is a convenient, economical and effective choice for general-purpose strapping, bundling, holding, and palletizing applications. With a relatively greater elongation, it renders a good impact resistance and snaps back on it to hold loads securely.

Strapping - MOPP - 2.7 mil

Product Number	Size	Color	Case Weight	Rolls/Case
SA827	12 mm x 55 M ½" x 60 yd	Black	18 lbs	144
SA827	18 mm x 55 M ¾" x 60 yd	Black	18 lbs	96
SA827	24 mm x 55 M 1" x 60 yd	Black	18 lbs	72

Thickness: 2.7 mil, Tensile: 90 lbs/in, Adhesion: 30 oz/in, Elongation: 30%, Adhesive: Acrylic

Clear and 2 white colors are available for a longer lead time. Inquire for details.

Cross Reference: TESA 4090, Shurtape PS748, IPG 197, 3M 860



The filament reinforced film tape is a popular strapping solution, for its varieties in design, convenience and assurance in all sorts of applications. It has a higher tensile strength as compared to an MOPP film tape, and with a minimal elongation (of 5% with fiberglass) for rattling or vibrating containment. A PET film backing is stiffer for better handling, and provides a better abrasion resistance.

Filament - 100# TENSILE STRENGTH - 4.0 mil

Product Numbers	Size	Color	Case Weight	Rolls/Case
RG840	12 mm x 55 M ½" x 60 yd	Clear	14 lbs	72
RG840	18 mm x 55 M ¾" x 60 yd	Clear	14 lbs	48
RG840	24 mm x 55 M 1" x 60 yd	Clear	14 lbs	36
RG840	36 mm x 55 M 1 ½" x 60 yd	Clear	14 lbs	24
RG840	48 mm x 55 M 2" x 60 yd	Clear	16 lbs	24
RG840	72 mm x 55 M 3" x 60 yd	Clear	14 lbs	16

Backing: OPP, Reinforcement: Fiberglass, Thickness: 4.0 mil, Tensile: 100 lbs/in, Adhesion: 48 oz/in, Temperature °C (°F): -5 - 70 (23 - 158), Adhesive: Synthetic rubber, Applications: General/Utility

Cross Reference: IPG RG300, Shurtape GS490, 3M 8934

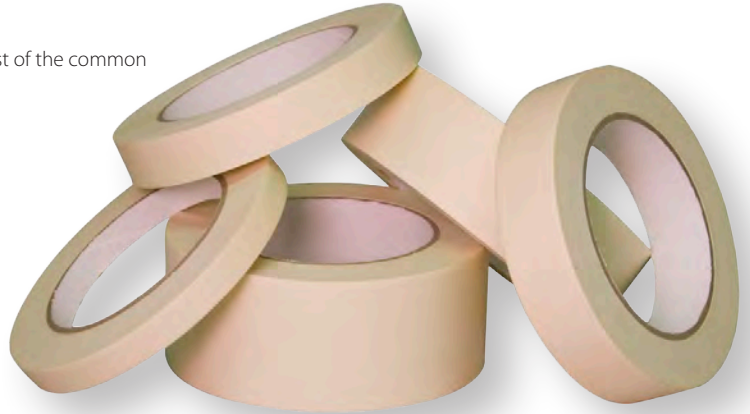


INDUSTRIAL TAPES

PAPER MASKING TAPE

Paper masking tape is a common and indispensable product in several light-duty holding applications. It features the unique and unchallengeable set of properties: economical, quick stick to different surfaces, adhesive-residue free, hand tearable, pliable, of good tensile strength, and with a good degree of moisture or solvent resistance.

Qspac paper masking tapes are a straightforward set of products that cover most of the common applications, with great values in cost saving, performance and quality.



Economy Grade - 5.0 mil

Product Number	Size	Color	Case Weight	Rolls/Case
MK360	12 mm x 55 M ½ in x 60 yd	Natural	11 lbs	72
MK360	18 mm x 55 M ¾ in x 60 yd	Natural	11 lbs	48
MK360	24 mm x 55 M 1 in x 60 yd	Natural	11 lbs	36
MK360	48 mm x 55 M 2 in x 60 yd	Natural	14 lbs	24
MK360	72 mm x 55 M 3 in x 60 yd	Natural	11 lbs	12

Backing: Saturated Crepe Paper, Thickness: 5.0 mil, Tensile: 18 lbs/in, Temperature °C (°F): 60 (140), Adhesive: Solvent rubber, Applications: Economy, General Purpose

Cross Reference: **Shurtape** CP101, CP105, CP106; **3M** 2214; **IPG** 511

Economical crepe paper masking tape, well balanced performance, adhesion, tensile strength and temperature resistance. Great for general purpose paint masking, temporary holding and packaging applications.

General Purpose - 5.2 mil

Product Number	Size	Color	Case Weight	Rolls/Case
MK652	12 mm x 55 M ½ in x 60 yd	Natural	11 lbs	72
MK652	18 mm x 55 M ¾ in x 60 yd	Natural	11 lbs	48
MK652	24 mm x 55 M 1 in x 60 yd	Natural	11 lbs	36
MK652	36 mm x 55 M 1 ½ in x 60 yd	Natural	11 lbs	24
MK652	48 mm x 55 M 2 in x 60 yd	Natural	14 lbs	24
MK652	72 mm x 55 M 3 in x 60 yd	Natural	11 lbs	12

Backing: Saturated Crepe Paper, Thickness: 5.2 mil, Tensile: 20 lbs/in, Temperature °C (°F): 80 (176), Adhesive: Solvent rubber, Applications: General paint masking and holding

Cross Reference: **Surtape** CP83, CP102, CP107; **IPG** 513, 514, 515, PG505, PTS; **3M** 200, 2307

The general purpose masking has sufficient adhesion, tensile strength and temperature resistance to cover most common applications for paint masking, temporary holding and packaging purposes.

INDUSTRIAL TAPES

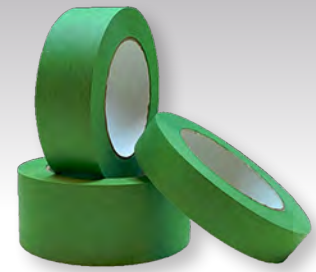
PAPER MASKING TAPE & DUCT TAPE

Green Painter's Grade - 7 day - 5.2 mil

Product Number	Size	Color	Case Weight	Rolls/Case
MK654	24 mm x 55 M 1 in" x 60 yd	Green	11 lbs	36
MK654	36 mm x 55 M 1 ½ in" x 60 yd	Green	11 lbs	24
MK654	48 mm x 55 M 2 in" x 60 yd	Green	14 lbs	24

Backing: Saturated Crepe Paper, Thickness: 5.2 mil, Tensile: 24 lbs/in, Temperature °C (°F): 95 (203), Adhesive: Solvent rubber, Applications: 7 Day UV resistant, Painter's Green

Cross Reference: **Shurtape** CP20, CP150; **3M** 233; **IPG** PT8



Indoor applications, 7 Day UV rating, with good tensile strength.

Blue Painter's Grade - 14 day - 5.2 mil

Product Number	Size	Color	Case Weight	Rolls/Case
MK655	18 mm x 55 M ¾ in" x 60 yd	Blue	13 lbs	48
MK655	24 mm x 55 M 1 in" x 60 yd	Blue	13 lbs	36
MK655	36 mm x 55 M 1 ½ in" x 60 yd	Blue	13 lbs	24
MK655	48 mm x 55 M 2 in" x 60 yd	Blue	16 lbs	24
MK655	72 mm x 55 M 3 in" x 60 yd	Blue	16 lbs	16

Backing: Saturated Crepe Paper, Thickness: 5.3 mil, Tensile: 25 lbs/in, Temperature °C (°F): 95 (203), Adhesive: Solvent rubber, Applications: 14 Day UV resistant, Painter's Blue

Cross Reference: **Shurtape** CP27, **3M** 2750, **IPG** PT14



Indoor applications, 14 Day UV rating, with good tensile strength.

Duct Tape - 9.0 mil

Product Number	Size	Color	Case Weight	Rolls/Case
DT390-SV	48 mm x 55 M 2" x 60 yds	Silver	33 lbs	24
DT390-RD	48 mm x 55 M 2" x 60 yds	Red	33 lbs	24
DT390-BK	48 mm x 55 M 2" x 60 yds	Black	33 lbs	24
DT390-WT	48 mm x 55 M 2" x 60 yds	White	33 lbs	24

Cross Reference: **Nashua** 394, **ULINE** S-6519, **3M** 3939, **Shurtape** PC608, **IPG** AC20



Industrial Grade Duct Tape Synthetic Rubber Adhesive 9.0 mil thickness

QSPAC duct tape can be used for bundling, heavy carton sealing, general maintenance, pipe wrapping, HVAC duct seaming and joint sealing repairs.

Features:

- Good Tensile Strength
- Hand Tearable
- Excellent Moisture Resistance
- Conforms well to irregular surfaces



INDUSTRIAL TAPES

BAG SEALING TAPE

Product Number	Size	Color	Case Weight	Rolls/Case	
BS222-WT	9 mm x 165 M	¾" x 180 yds	White	23 lbs	96
BS224-RD	9 mm x 165 M	¾" x 180 yds	Red	23 lbs	96
BS224-GN	9 mm x 165 M	¾" x 180 yds	Green	23 lbs	96
BS224-YL	9 mm x 165 M	¾" x 180 yds	Yellow	23 lbs	96
BS224-OG	9 mm x 165 M	¾" x 180 yds	Orange	23 lbs	96

* Custom slitting available

Cross Reference:

- Sealing film bags swiftly and efficiently when used with a bag sealing dispenser
- Solvent based natural rubber adhesive
- Thickness: 2.4 mil for colors and 2.2 mil for white
- 22 lbs. tensile strength
- UPVC film



For use with dispensers (page 25):

QPC-7605

QPC-7605K

QPC-7606STK

QPC-7808K

INDUSTRIAL TAPES

DOUBLE SIDED TAPES

The set of products presented covers most common applications that call for a double-sided tape, either general purpose or demanding industrial.

- All the items are with solvent-based acrylic adhesive for the superior longevity, weather resistance, clarity and balanced performance (except DC610 and DC612 with rubber adhesive)
- Applications: fixing, holding, splicing, lamination, mounting, component assembly
- Markets: Packaging, Converting, Rubber/Molding Extrusion, Corrugated Paperboard Processing, Insulation and Gasket Fabrication, Electronic and Electrical Assembly
- Great values in cost, short lead time, technical support and the factory backup for your specific applications

Carriers

The carrier is the reinforcing flexible material that is coated with the adhesive on both sides, such as tissue, film, foam or other. If there is no carrier, the double-sided tape is called a transfer tape, a special kind. The carrier imparts important physical properties in applications.

Transfer Tape

The transfer tape is found preferable in many foam laminations, mounting and component assembly applications, due to its extreme pliability. While with an ATG tape situation, it's the most convenient way to apply a double-sided tape.

Tissue

A double-sided tissue tape is versatile, hand tearable, easy to apply, conformable, and economical. It is widely used around the world for lamination, splicing, holding and component assembly. With different adhesive systems, this group of products would cover most of the applications commonly seen in various industries.

Film

A double-sided film tape provides extra tensile strength, in contrast to a double-sided tissue, and at the same time it could be very thin, and easy to handle.

Foam

A double-sided foam tape provides certain cushioning for the two surfaces being bonded. This cushioning effect is normally required for bonding two rigid surfaces together, in order to offset any surface irregularity or texture. Therefore, sometimes it is called a mounting tape.

Paper

Paper is much denser, thicker and stronger than tissue, and lying flat. With selected and controlled adhesive coating, these tapes are great for certain holding applications.



INDUSTRIAL TAPES

DOUBLE SIDED TAPES

Film (Polyester) - 3.6 mil

Product Number	Size	Color	Case Weight	Rolls/Case
DL13C	12 mm x 55 M	½" x 60 yds	Clear	31 lbs
DL13C	19 mm x 55 M	¾" x 60 yds	Clear	31 lbs
DL13C	25 mm x 55 M	1" x 60 yds	Clear	31 lbs
DL13C	50 mm x 55 M	2" x 60 yds	Clear	31 lbs
DR13C	1219 mm x 55 M	48" x 60 yds	Clear	31 lbs

Economical and general-purpose. Adheres well to various surfaces with solvent based acrylic adhesive. Great for general lamination, splicing and attaching applications.

Liner: White Paper, Thickness: 3.6 mil (excluding liner), Adhesion: 43 oz/in

Cross Reference: **3M** 415, 444, **Achem** 254M, **Polyken** 126, **Cactus** P297



Film (Polyester) - 8.0 mil

Product Number	Size	Color	Case Weight	Rolls/Case
DL48C	12 mm x 33 M	½" x 36 yds	Clear	28 lbs
DL48C	19 mm x 33 M	¾" x 36 yds	Clear	28 lbs
DL48C	25 mm x 33 M	1" x 36 yds	Clear	28 lbs
DL48C	50 mm x 33 M	2" x 36 yds	Clear	28 lbs
DL48C	1219 mm x 33 M	48" x 36 yds	Clear	28 lbs

Industrial and high performance grade. Engineered and modified solvent based acrylic adhesive for strong bonding on various surfaces, migration and high temperature resistance, good clarity with red PE film liner. Used for extrusion lamination and demanding applications.

Liner: Red MOPP, Thickness: 8.0mil (excluding liner), Adhesion: 65 oz/in

Cross Reference: **TESA** 4965, **3M** 9088FL



Film (UPVC) - 9.0 mil

Product Number	Size	Color	Case Weight	Rolls/Case
DL49W	12 mm x 33 M	½" x 36 yds	Clear	34 lbs
DL49W	19 mm x 33 M	¾" x 36 yds	Clear	34 lbs
DL49W	25 mm x 33 M	1" x 36 yds	Clear	34 lbs
DL49W	50 mm x 33 M	2" x 36 yds	Clear	34 lbs
DL49W	1219 mm x 33 M	48" x 36 yds	Clear	34 lbs

Special and high performance grade with high coating weight and white UPVC carrier. Modified solvent based acrylic adhesive for good bonding to various surfaces, smooth or rough. Used for plastic and wooden trims mounting, displays, signs and scales mounting, and banner hemming.

Liner: Mustard Glassine, Thickness: 9.0mil (excluding liner), Adhesion: 65 oz/in

Cross Reference: **TESA** 4970, **3M** 9087



Custom widths available on all double sided tapes.

INDUSTRIAL TAPES

DOUBLE SIDED TAPES

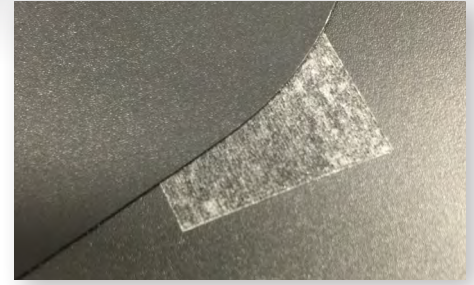
Tissue - 3.5 mil

Product Number	Size	Color	Case Weight	Rolls/Case
DS13L	12 mm x 55 M	½" x 60 yds	Translucent	31 lbs
DS13L	19 mm x 55 M	¾" x 60 yds	Translucent	31 lbs
DS13L	25 mm x 55 M	1" x 60 yds	Translucent	31 lbs
DS13L	50 mm x 55 M	2" x 60 yds	Translucent	31 lbs
DS13L	1219 mm x 55 M	48" x 60 yds	Translucent	31 lbs

Economical and general purpose. Adheres well to various surfaces with long lasting solvent based acrylic adhesive. Great for general and common lamination, splicing and affixing applications.

Liner: White Paper, Thickness: 3.6 mil (excluding liner), Adhesion: 47 oz/in

Cross Reference: **TESA** 51575, **IPG** DCT101A, **Avery** FT8716



Tissue - 4.0 mil

Product Number	Size	Color	Case Weight	Rolls/Case
DS24B	12 mm x 50 M	½" x 55 yds	Black	29 lbs
DS24B	19 mm x 50 M	¾" x 55 yds	Black	29 lbs
DS24B	25 mm x 50 M	1" x 55 yds	Black	29 lbs
DS24B	50 mm x 50 M	2" x 55 yds	Black	29 lbs
DS13L	1000 mm x 50 M	40" x 55 yds	Black	29 lbs

Special black colored, industrial oriented. Engineered, well balanced solvent based acrylic adhesive for long lasting, weather resistant performance. Used for foam lamination and components assembly, such as speakers, nameplates and membrane switches etc.

Liner: White Paper, Thickness: 4.0 mil (excluding liner), Adhesion: 40 oz/in

Cross Reference: **Cactus** P248E, **ATP** DC-4210V5-B

Tissue - 4.0 mil

Product Number	Size	Color	Case Weight	Rolls/Case
DS24L	12 mm x 50 M	½" x 55 yds	Translucent	29 lbs
DS24L	19 mm x 50 M	¾" x 55 yds	Translucent	29 lbs
DS24L	25 mm x 50 M	1" x 55 yds	Translucent	29 lbs
DS24L	50 mm x 50 M	2" x 55 yds	Translucent	29 lbs
DS24L	1219 mm x 50 M	48" x 55 yds	Translucent	29 lbs

Industrial and utility grade. Engineered, well balanced solvent based acrylic adhesive for long lasting, weather and temperature resistant. Good for foam lamination, corrugated paper splicing, paperboard and carton box fabrications, and nameplates, displays or insulation materials affixing etc.

Liner: White Paper, Thickness: 4.0 mil (excluding liner), Adhesion: 40 oz/in

Cross Reference: **IPG** DCT090A, DCT102A, **TESA** 4943, 4959, 68144

Tissue - 5.1 mil

Product Number	Size	Color	Case Weight	Rolls/Case
DS25L	12 mm x 50 M	½" x 55 yds	Translucent	36 lbs
DS25L	19 mm x 50 M	¾" x 55 yds	Translucent	36 lbs
DS25L	25 mm x 50 M	1" x 55 yds	Translucent	36 lbs
DS25L	50 mm x 50 M	2" x 55 yds	Translucent	36 lbs
DS25L	1219 mm x 50 M	48" x 55 yds	Translucent	36 lbs

Industrial and performance grade. Engineered, well balanced solvent based acrylic adhesive for strong adhesion, long lasting, weather and temperature resistant. Good for foam and felt laminations, splicing of plastic film, paper and foil, and affixing of various objects.

Liner: White Paper, Thickness: 5.1 mil (excluding liner), Adhesion: 47 oz/in

Cross Reference: **Cactus** K2470, **TESA** 4987, 50658

INDUSTRIAL TAPES

DOUBLE SIDED TAPES

Foam - 1/32"

Product Number	Size	Color	Case Weight	Rolls/Case
DF2AW	12 mm x 66 M	1/2" x 72 yds	White 15 lbs	24
DF2AW	19 mm x 66 M	3/4" x 72 yds	White 15 lbs	16
DF2AW	25 mm x 66 M	1" x 72 yds	White 15 lbs	12
DF2AW	50 mm x 66 M	2" x 72 yds	White 15 lbs	6
DF2AW	1020 mm x 66 M	40" x 72 yds	White 15 lbs	1

Weather resistant and utility grade. Engineered and well balanced solvent based acrylic adhesive for good bonding to various surfaces, either rough or smooth, and long lasting services, coated on both sides of a closed-cell, radiation cross linked 6# PE foam. Great for common objects mounting and attaching applications, and cushioning and sealing as well, in roll or die-cut forms.

Liner: White Paper, Thickness: 1/32" (excluding liner), Adhesion: 72 oz/in

Cross Reference: **Cactus** N2208, **Avery** FM2333, **3M** 4492, **FLEXcon** 103 (1/32")

Foam - 1/16"

Product Number	Size	Color	Case Weight	Rolls/Case
DF2BW	12 mm x 33 M	1/2" x 36 yds	White 10 lbs	24
DF2BW	19 mm x 33 M	3/4" x 36 yds	White 10 lbs	16
DF2BW	25 mm x 33 M	1" x 36 yds	White 10 lbs	12
DF2BW	50 mm x 33 M	2" x 36 yds	White 10 lbs	6
DF2BW	1020 mm x 33 M	40" x 36 yds	White 10 lbs	1

Weather resistant and utility grade. Engineered and well balanced solvent based acrylic adhesive for good bonding to various surfaces, either rough or smooth, and long lasting services, coated on both sides of a closed-cell, radiation cross linked 4# PE foam. Great for common objects mounting and attaching applications, and cushioning and sealing as well, in roll or die-cut forms.

Liner: White Paper, Thickness: 1/16" (excluding liner), Adhesion: 72 oz/in

Cross Reference: **Cactus** N2215, **Avery** FM2316, **3M** 4496, **FLEXcon** 103 (1/16")

Foam - 1/8"

Product Number	Size	Color	Case Weight	Rolls/Case
DF2CW	12 mm x 16.5 M	1/2" x 18 yds	White 7 lbs	24
DF2CW	19 mm x 16.5 M	3/4" x 18 yds	White 7 lbs	16
DF2CW	25 mm x 16.5 M	1" x 18 yds	White 7 lbs	12
DF2CW	50 mm x 16.5 M	2" x 18 yds	White 7 lbs	6
DF2CW	1020 mm x 16.5 M	40" x 18 yds	White 7 lbs	1

Weather resistant and utility grade. Engineered and well balanced solvent based acrylic adhesive for good bonding to various surfaces, either rough or smooth, and long lasting services, coated on both sides of a closed-cell, radiation cross linked 4# PE foam. Great for common objects mounting and attaching applications, cushioning and sealing as well, in roll or die-cut forms.

Liner: White Paper, Thickness: 1/8" (excluding liner), Adhesion: 72 oz/in

Cross Reference: **Cactus** N2230, **FLEXcon** 103 (1/8")

Flatback Paper - 5.0 mil

Product Number	Size	Color	Case Weight	Rolls/Case
DC610	12 mm x 33 M	1/2" x 36 yds	White 23 lbs	72
DC610	19 mm x 33 M	3/4" x 36 yds	White 23 lbs	48
DC610	25 mm x 33 M	1" x 36 yds	White 23 lbs	36
DC610	50 mm x 33 M	2" x 36 yds	White 23 lbs	24

Special, unique and economical product. Engineered and well balanced solvent based rubber adhesive for good bonding to most common surface, and relatively removable. Strong flatback paper imparts good handling. Ideal for holding down workpiece temporarily or something permanently.

Liner: White Glassine, Thickness: 5.0mil (excluding liner), Adhesion: 42 oz/in

Cross Reference: **IPG** 592, **Shurtape** DF65

Flatback Paper - 7.0 mil

Product Number	Size	Color	Case Weight	Rolls/Case
DC612	12 mm x 33 M	1/2" x 36 yds	White 24 lbs	72
DC612	19 mm x 33 M	3/4" x 36 yds	White 24 lbs	48
DC612	25 mm x 33 M	1" x 36 yds	White 24 lbs	36
DC612	50 mm x 33 M	2" x 36 yds	White 24 lbs	24

Special and unique product. Engineered and well balanced solvent based rubber adhesive for good bonding to most common surface, and relatively removable. Strong flatback paper imparts good handling. Ideal for holding down workpiece temporarily or something permanently, such as golf grips

Liner: White Glassine, Thickness: 7.0mil (excluding liner), Adhesion: 42 oz/in

Cross Reference: **IPG** 591; **Shurtape** GG200, DF63, **Cantech** 406-00





(Black Ink)

PRINT YOUR OWN TAPE!

PrintWiz®

US Patent No. 8,991,311 B2

The QSPAC Print Wiz® is a hand-held tape dispenser that creates printed tape as needed. The dispenser will print a short message onto the adhesive side of the tape. You have the option of using acrylic or hot melt tape with any mil thickness and a variety of colors. A great alternative to traditional custom printed tapes that require large minimum orders.

- ◆ Printed tape as needed
- ◆ Prints on adhesive side
- ◆ No drying time necessary
- ◆ Ink absorbed on the box creating a security seal
- ◆ Ability to change print messages instantly
- ◆ Uses 2" wide tape
- ◆ Black, Blue, & Red ink available



DISPENSERS

TAPE GUN DISPENSERS

Premiere

Product Number	Size	Units/Case	Case Weight
QPC-239	2 in	24	41 lbs
QPC-339	3 in	12	26 lbs

- Work Horse - most durable dispenser
- Heavy Steel Construction
- Natural Rubber Roller holds tape in place
- Adjustable Brake for tension control



Premiere Plus

Product Number	Size	Units/Case	Case Weight
QPC-2398	2 in	24	44 lbs
QPC-3398	3 in	12	28 lbs

- Same construction as Premier
- Retractable Safety Blade
- Metal Reinforced wipe down



Supreme

Product Number	Size	Units/Case	Case Weight
QPC-206	2 in	24	29 lbs

- Ergonomical design to reduce fatigue
- Spring Loaded Metal Gate for easy tape installation
- Adjustable Brake for tension control



Product Number	Size	Units/Case	Case Weight
QPC-209	2 in	24	27 lbs
QPC-326	3 in	24	38 lbs

- Ergonomical design to reduce fatigue
- Natural Rubber Roller holds tape in place
- Adjustable Brake for tension control



Deluxe

Product Number	Size	Units/Case	Case Weight
QPC-306	3 in	12	22 lbs

- Sturdy Steel Frame for durability
- Special Designed Loading Gate to prevent tape reversing
- QPC-306 accommodates tapes up to 200 meters
- Adjustable Brake for tension control



Value

Product Number	Size	Units/Case	Case Weight
QPC-203	1 1/2 in	24	22 lbs
QPC-213	2 in	24	23 lbs
QPC-304	3 in	20	29 lbs

- Good Quality Steel Frame
- Excellent choice for promotional giveaway
- Heat Treated Blades
- Adjustable Brake for tension control



Value Soft Grip

Product Number	Size	Units/Case	Case Weight
QPC-213SG	2 in	24	23 lbs
QPC-303SG	3 in	20	29 lbs

- Durable Cushioned Foam Grip to reduce fatigue



Trap-It

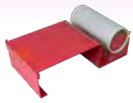
Product Number	Size	Units/Case	Case Weight
QPC-215RR	2 in	24	21 lbs
QPC-315RR	3 in	24	29 lbs

- Easy to load
- Designed to fit tape with any core size
- Reduced Noise - quieter on the unwind
- Natural Rubber Roller holds tape in place



DISPENSERS

DESKTOP & HAND HELD TAPE DISPENSERS

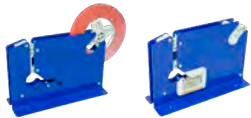


Label Protection & Pouch Tape Dispenser

Product Number	Size	Units/Case	Case Weight
QPC-600M	6 in	12	40 lbs

- Heavy Metal Construction
- Can be bench mounted
- Hold rolls up to 144 yds long
- Large surface to affix labels to tape

Bag Sealer



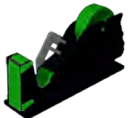
Product Number	Size	Units/Case	Case Weight
QPC-7605	3/8 in	10	23 lbs
QPC-7605K	3/8 in	10	23 lbs
QPC-7808K	5/8 in	10	47 lbs

- Ideal for Packing Produce, Small Parts, Candy, Newspapers, Bakery Products, and more...
- Heavy Metal Construction
- QPC-7605K & QPC-7808K equipped with bag trimmer



Product Number	Size	Units/Case	Case Weight
QPC7606STK	3/8 in	10	24 lbs

- Stainless Steel Frame for Food & Clean Room operations
- QPC-7606STK equipped with bag trimmer



Multi-Roll Desktop Dispenser

Product Number	Size	Units/Case	Case Weight
QPC-7316	1 in	12	40 lbs
QPC-7326	2 in	12	41 lbs
QPC-7336	3 in	6	26 lbs

- Multiple rolls capability
- Multi-level design makes easy tape selection
- Fit rolls from 1/4" to maximum width of the dispenser
- Weighed Base for stability
- Reinforced Cutting Blade



Tape & Label Desktop Dispenser



Product Number	Size	Units/Case	Case Weight
QPC-9506	6 in	1	7 lbs
QPC-9512	12 in	1	10 lbs
QPC-9518	18 in	1	13 lbs

- Dispense tape & label on same dispenser
- Allow rolls up to 7" in diameter
- Easy to change one roll at a time



Desktop Stationery Tape Dispenser

Product Number	Size	Units/Case	Case Weight
QPC-135HD	1 in	12	26 lbs

- * Fit tapes up to 1" wide
- * Convertible core holder accommodates
- 1" or 3" ID core

Hand Held Dispenser



Product Number	Size	Units/Case	Case Weight
QPC-125	1 in	100	24 lbs
QPC-224	2 in	120	34 lbs

- High Impact Plastic Construction
- Suitable for cutting filament tapes
- Also works well for packaging tapes

DISPENSERS

PHOENIX WATER ACTIVATED TAPE DISPENSERS

**AUTHORIZED
WEST COAST
DISTRIBUTOR!**

Manual Series



QPC-PX-M1

Like all Phoenix® equipment the QPC-PX-M1 is built to create efficiency in your shipping department. The Phoenix Manual Series will dispense up to 30" in a single pull and any desired length is achieved with multiple pulls of the handle. The manual series dispenses tapes from 1.5" through 3". Like all Phoenix® equipment the QPC-PX-M1 is built to crank through the big jobs and is built using steel construction with baked enamel finish to prevent corrosion. It even has a utility top that stores markers, carton knives, hand stamps, etc.



QPC-PX-M2

All of the great features of the QPC-PX-M1 plus the added capabilities of a top heater. In addition to the top heater, which ensures maximum penetration of the gum into your carton, the QPC-PX-M2 comes with a three brush moistening system that is the best in the industry.

Electronic Series



QPC-PX-E1

The QPC-PX-E1 is an absolute workhorse. With features like front-mounted keypad, self oiling cutter, thermostat controllable heater, and a uniform three brush moistening system. The QPC-PX-E1 is ideal for most packaging applications. The continuous bottom edge crimp gives stability. The tape delivery system delivers tape with a smooth precise feed. Utility top is great for those easily misplaced items like markers, pens, carton knives, handstamps, etc.

STRETCH FILM

NITRO FILM



HIFORCE: Hand 5-Layer Film

Product Number	Size	Net Case Weight	Quantity
SF164015-NIT	15.7" x 1476' – 40 Gauge (10 micron)	14.83 lbs	64 Cases/Pallet
SF184015-NIT	17.7" x 1476' – 40 Gauge (10 micron)	16.72 lbs	64 Cases/Pallet
SF164715-NIT	15.7" x 1476' – 47 Gauge (12 micron)	17.43 lbs	64 Cases/Pallet
SF184715-NIT	17.7" x 1476' – 47 Gauge (12 micron)	19.65 lbs	64 Cases/Pallet
SF165515-NIT	15.7" x 1476' – 55 Gauge (14 micron)	20.39 lbs	64 Cases/Pallet
SF185515-NIT	17.7" x 1476' – 55 Gauge (14 micron)	22.99 lbs	64 Cases/Pallet

- Lightweight gauges
- Engineered formulation for superior strength
- Allows down gauging to reduce load costs
- Superior holding force

HISTRETCH: Hand Conventional Films

Product Number	Size	Net Case Weight	Quantity
SF166315-NIT	16" x 1500' – 63 Gauge	24.19 lbs	64 Cases/Pallet
SF187015-NIT	18" x 1500' – 70 Gauge	30.24 lbs	64 Cases/Pallet
SF188010-NIT	18" x 1000' – 80 Gauge	23.04 lbs	64 Cases/Pallet
SF188015-NIT	18" x 1500' – 80 Gauge	34.56 lbs	48 Cases/Pallet
SF189015-NIT	18" x 1500' – 90 Gauge	38.90 lbs	48 Cases/Pallet
SF1812010-NIT	18" x 1000' – 120 Gauge	34.62 lbs	48 Cases/Pallet

- Good puncture and tear resistance
- Quiet application and easy unwind
- High elongation
- Superior holding force

HILITE: Pre-Stretch Film (Bulk)

Product Number	Size	Net Roll Weight	Quantity
SF153015B-NITPRE	15" x 1476' – 30 Gauge	2.66 lbs	168 Rolls/Pallet
SF173015B-NITPRE	17" x 1476' – 30 Gauge	3.01 lbs	112 Rolls/Pallet

- Easy to release and apply
- Operator friendly due to light roll weight
- Reduced load cost
- Reinforced edge preventing edge tearing
- Good holding force

Machine Films

Product Number	Size	Net Roll Weight	Quantity
SF206350-NIT	20" x 5000' – 63 Gauge	25.20 lbs	50 Rolls/Pallet
SF207050-NIT	20" x 5000' – 70 Gauge	28.00 lbs	40 Rolls/Pallet
SF208050-NIT	20" x 5000' – 80 Gauge	32.00 lbs	40 Rolls/Pallet

- Good puncture and tear resistance
- Quiet application and easy unwind
- High elongation
- Superior holding force

Machine Film - Individually Boxed

Product Number	Size	Net Roll Weight	Quantity
SF208050-1-NIT	20" x 5000' – 80 Gauge	32.00 lbs	1 Roll/Box

STRETCH FILM

LOADSTAR PLUS

Engineered Hand Film

Product Number	Size	Net Case Weight	Quantity
SF164515-PLUS	15.7" x 1476' - 11.5 Micron (45 Gauge)	16.68 lbs	64 Cases/Pallet
SF184515-PLUS	17.7" x 1476' - 11.5 Micron (45 Gauge)	18.81 lbs	64 Cases/Pallet
SF165515-PLUS	15.7" x 1476' - 14.0 Micron (55 Gauge)	20.39 lbs	64 Cases/Pallet
SF185515-PLUS	17.7" x 1476' - 14.0 Micron (55 Gauge)	22.99 lbs	64 Cases/Pallet

Features:

- New patented resins
- Unrivaled load-holding force
- Superior cling
- Unsurpassed puncture resistance
- Low neck-down vs. wider conventional films
- Superb economical value
- Excellent clarity
- Quiet release
- Environmentally friendly - source reduction



LOADSTAR™ PLUS

AMTOPP Machine & Hand Film

Machine Film - ELB - 300% Stretch / One Side Cling

Product Number	Size	Net Case Weight	Quantity
SF204090	19.7" x 9000' - 10.2 Micron (40 Gauge)	28.37 lbs	40 Rolls/Pallet
SF205190	19.7" x 9000' - 13.0 Micron (51 Gauge)	36.17 lbs	40 Rolls/Pallet

AMTOPP "EHB" Film 300% Stretch / One Side Cling

Product Number	Size	Net Roll Weight	Quantity
SF206350-EH	19.7" x 5000' - 16.0 Micron (63 Gauge)	24.82 lbs	50 Rolls/Pallet
SF206375-EH	19.7" x 7500' - 16.0 Micron (63 Gauge)	37.23 lbs	40 Rolls/Pallet
SF306350-EH	29.5" x 5000' - 16.0 Micron (63 Gauge)	37.17 lbs	25 Rolls/Pallet

Features:

- Unsurpassed pre-stretch levels
- Premium 9-layer structure
- Excellent down-gauge film
- Superior load holding force
- Aggressive differential cling with superior inside and minimal outside cling
- Outstanding puncture and tear resistance
- Clear optics
- Quiet unwind
- High tensile strength
- Lowest unit cost = Best economic value

STRETCH FILM

CONVENTIONAL HAND FILM

Pre-Stretched Film: Bulk

Product Number	Size	Net Roll Weight	Pallet Quantity
SF153220-PRE	15" x 1968' - 30 Gauge - AMTOPP	3.54 lbs	126 Rolls

Conventional Hand Film

Product Number	Size	Net Case Weight	Quantity
SF157015	15" x 1500' - 17.8 Micron (70 Gauge)	25.20 lbs	64 Cases/Pallet
SF187015	18" x 1500' - 17.8 Micron (70 Gauge)	30.24 lbs	64 Cases/Pallet
SF128015	12" x 1500' - 20.3 Micron (80 Gauge)	23.04 lbs	60 Cases/Pallet
SF158015	15" x 1500' - 20.3 Micron (80 Gauge)	28.80 lbs	48 Cases/Pallet
SF188015	18" x 1500' - 20.3 Micron (80 Gauge)	34.60 lbs	48 Cases/Pallet

Blown Stretch Film (4 rolls/case)

Product Number	Size	Net Case Weight	Quantity
SF188015-BLOWN	18" x 1500' - 20 Micron (79 Gauge)	34.13 lbs	48 Cases/Pallet

AMTOPP "EPB" Series - 250% Stretch / One Side Cling

Product Number	Size	Net Roll Weight	Quantity
SF207050	20" x 5000' - 17.8 Micron (70 Gauge)	28.0 lbs	40 Rolls/Pallet
SF207060	20" x 6000' - 17.8 Micron (70 Gauge)	33.6 lbs	40 Rolls/Pallet
SF207550	20" x 5000' - 19.0 Micron (75 Gauge)	30.0 lbs	40 Rolls/Pallet
SF208050	20" x 5000' - 20.3 Micron (80 Gauge)	32.0 lbs	40 Rolls/Pallet
SF208060	20" x 6000' - 20.3 Micron (80 Gauge)	38.4 lbs	40 Rolls/Pallet
SF308050	30" x 5000' - 20.3 Micron (80 Gauge)	48.0 lbs	20 Rolls/Pallet
SF209050	20" x 5000' - 22.9 Micron (90 Gauge)	36.0 lbs	40 Rolls/Pallet
SF2011535	20" x 3500' - 29.2 Micron (115 Gauge)	32.2 lbs	40 Rolls/Pallet

UVI Machine Film - 250% Stretch / Inside Cling & Reduced Outside Cling

Product Number	Size	Net Roll Weight	Quantity
SF208050-UV	20" x 5000' - 80 Gauge	32.00 lbs	40 Rolls/Pallet

Features:

- New patented resins
- Unrivaled load-holding force
- Superior cling

Benefits:

- Inventory control
- Load appearance
- Identification
- Security



CONVENTIONAL MACHINE FILM

Features:

- New patented resins
- Unrivaled load-holding force
- Superior cling
- Unsurpassed puncture resistance
- Low neck-down vs. wider conventional films
- Superb economical value
- Excellent clarity
- Quiet release
- Environmentally friendly - source reduction

STRETCH FILM

COLORED FILMS

HAND - Tinted Colored Stretch Film (4 rolls/case)

Product Number	Size	Net Case Weight	Quantity
SF188015RD	18" x 1500' - 80 Gauge - Red	34.60 lbs	48 Cases/Pallet
SF188015BL	18" x 1500' - 80 Gauge - Blue	34.60 lbs	48 Cases/Pallet
SF188015GN	18" x 1500' - 80 Gauge - Green	34.60 lbs	48 Cases/Pallet
SF188015OG	18" x 1500' - 79 Gauge - Orange	34.13 lbs	48 Cases/Pallet
SF188015YL	18" x 1500' - 80 Gauge - Yellow	34.60 lbs	48 Cases/Pallet



HAND - Black Opaque Stretch Film (4 rolls/case)

Product Number	Size	Net Case Weight	Quantity
SF188015BK	18" x 1500' - 80 Gauge - Black	34.56 lbs	48 Cases/Pallet



MACHINE - Tinted Colored Stretch Film (Sold by the Pallet)

Product Number	Size	Net Case Weight	Quantity
SF208050RD	20" x 5000' - 80 Gauge - Red	32 lbs	40 Rolls/Pallet
SF208050BL	20" x 5000' - 80 Gauge - Blue	32 lbs	40 Rolls/Pallet
SF208050GN	20" x 5000' - 80 Gauge - Green	32 lbs	40 Rolls/Pallet



MACHINE - Tinted Colored Stretch Film (Sold by the roll)

Product Number	Size	Net Case Weight	Quantity
SF208050RD-1	20" x 5000' - 80 Gauge - Red	32 lbs	1 Roll/Box
SF208050BL-1	20" x 5000' - 80 Gauge - Blue	32 lbs	1 Roll/Box
SF208050GN-1	20" x 5000' - 80 Gauge - Green	32 lbs	1 Roll/Box

MACHINE - Black Opaque Stretch Film (Sold by the Pallet)

Product Number	Size	Net Case Weight	Quantity
SF208050BK	20" x 5000' - 80 Gauge - Black	32 lbs	40 Rolls/Pallet



MACHINE - Black Opaque Stretch Film (Sold by the roll)

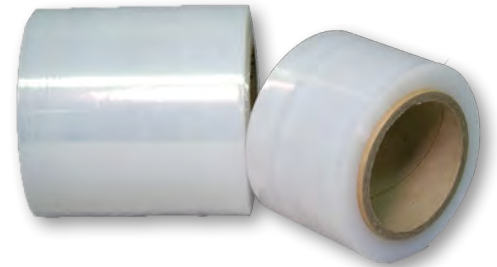
Product Number	Size	Net Case Weight	Quantity
SF208050BK-1	20" x 5000' - 80 Gauge - Black	32 lbs	1 Roll/Box

STRETCH FILM

BANDING & EXTENDED CORE HAND WRAP

Banding Film with 3" Cores - One Plastic Molded Handle Included

Product #	Size	Net Case Weight	Case Quantity
SF038010	3" x 1000' - 80 Gauge	17.28 lbs	18 Rolls
SF0312007	3" x 700' - 120 Gauge	18.14 lbs	18 Rolls



Banding Film with 3" Cores - One Plastic Molded Handle Included

Product #	Size	Net Case Weight	Case Quantity
SF054710	5" x 1000' - 12 Micron (47 Gauge)	11.28 lbs	12 Rolls
SF058010	5" x 1000' - 80 Gauge	19.20 lbs	12 Rolls
SF0512007	5" x 700' - 120 Gauge	20.16 lbs	12 Rolls

Banding Film with 1 1/2" Extended Lollipop Core

Product #	Size	Net Case Weight	Case Quantity
SF058010H	5" x 1000' - 80 Gauge	19.20 lbs	12 Rolls
SF058010H-15	5" x 1000' - 80 Gauge	24.00 lbs	15 Rolls



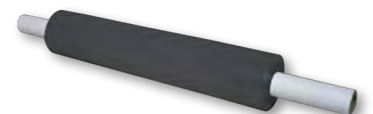
Extended Core Clear Cast Hand Film

Product #	Size	Net Case Weight	Pallet Quantity
SF204710H	20" x 1000' - 12 Micron (47 Gauge)	15.04 lbs	100 Cases
SF208010H	20" x 1000' - 80 Gauge	25.20 lbs	72 Cases
SF201207H	20" x 700' - 120 Gauge	26.52 lbs	72 Cases



Extended Core Black Opaque Hand Film

Product #	Size	Net Case Weight	Pallet Quantity
SF208010HBK	20" x 1000' - 80 Gauge (Black)	25.20 lbs	48 Cases



STRETCH FILM

DESCRIPTIONS & CONVERSION CHART

Cast Film

Manufactured for Hand & Machine application.

Advantages:

- Quiet
- Clear
- Easier to wrap pallet
- More selection of gauges, widths, and lengths

Blown Film

Manufactured for Hand & Machine application.

Advantages:

- Better for "C" type pallet wrapping

Disadvantages:

- Noisy
- Harder to pull off roll
- Milky color
- Limited availability

Conventional Film

Manufactured for Hand, Banding, and Machine Films.

Advantages:

- Availability - more choices in thicknesses, lengths, widths, and colors

Engineered Film

Fairly new manufacturing technique of cross-linking multiple layers of film. Thinner films that are stronger and stiffer to replace higher gauge films.

Advantages:

- Micron films - Measurement for thickness of film. See Conversion Chart.
- Gauge films - Measurement for thickness of film. See Conversion Chart.

Extended Core Hand Wrap Film

Stretch film applied by hand. Core size 1.5" extend to 4" beyond width of film. Available in 12 Micron, 80 and 120 gauges. Visit our website. Film width: 20".

Banding Films

Stretch film used for bundling. Normally available in 3" and 5" widths. 12 Micron, 80 gauge and 120 gauge. Visit our website.

Machine Films

Stretch film applied with semi-automatic or automatic machines. 20" and 30" widths available. Visit our website. Custom widths, lengths, and gauges available.

Conversion Chart

10.2 Micron = 40 gauge

11.5 Micron = 45 gauge

12.0 Micron = 47 gauge

13.0 Micron = 51 gauge

14.0 Micron = 55 gauge

15.2 Micron = 60 gauge

16.5 Micron = 65 gauge

17.0 Micron = 67 gauge

17.8 Micron = 70 gauge

19.0 Micron = 75 gauge

20.3 Micron = 80 gauge

22.9 Micron = 90 gauge

25.4 Micron = 100 gauge

29.2 Micron = 115 gauge

Micron = Gauge x 0.254

Gauge = Micron ÷ 0.254

Meter = Feet ÷ 3.28

Feet = Meter x 3.28

Meter = Yards ÷ 1.0937

Yards = Meter x 1.0937

Meter = 39.37 inches

Inches = mm ÷ 25.4

Formula

Stretch Film Case Weight =

$(\text{Width} \times \text{Length} \times \text{Gauge} \times \text{Number of Rolls in Case}) \div 250,000$

Example: $(18'' \times 1500' \times 80 \text{ gauge} \times 4) \div 250,000 = 34.56 \text{ lbs.}$

NOTE: Case weight is film weight only.

Cores and Boxes not included in weight on posted box.

STRETCH FILM

DISPENSERS



Product Number	Size	Units/Case	Case Weight
QPC-277	11.5 in ~ 20 in	6	28 lbs

- Knob Grip
- Heavy Steel Construction
- Adjustable tension control



Product Number	Size	Units/Case	Case Weight
QPC-278	11.5 in ~ 20 in	6	28 lbs

- Handle Grip
- Heavy Steel Construction
- Adjustable tension control



Product Number	Size	Units/Case	Case Weight
QPC-269	12 in ~ 18 in	6	31 lbs

- Handle Grip
- Heavy Steel Construction
- Adjustable tension control



Product Number	Size	Units/Case	Case Weight
QPC-268	3 in ~ 20 in	24 sets	13 lbs

- High Impact Plastic
- Lightweight
- Suitable for both hand stretch wrap and banding film
- Sold in pair (set)



Product Number	Units/Case
QPC-256	100

- Handy Grip Holder
- Work with 3 in or 5 in banding film

SHRINK FILM

CROSS LINKED POLYOLEFIN SHRINK FILM

SHRINK Q



Special Features

- High puncture and tear resistance
- High gloss & clarity
- Excellent optics
- Versatile: works well with a wide range of machines
- Ideal for irregularly shaped items
- FDA CRF 21.177.1502 compliant for direct food contact

Part Number	Gauge	Available Widths	Length (feet)
ZPX050	50	8", 10", 12", 14", 16", 18", 20"	5470'
ZPX060	60	10", 12", 14", 16", 18", 20"	4372'
ZPX075	75	10", 12", 14", 16", 18", 20"	3500'
ZPX100	100	10", 12", 14", 16", 18", 20"	2625'

SHRINK FILM

CROSS LINKED POLYOLEFIN SHRINK FILM

Property	ASTM Test Method	Typical Values			
		ZPX050	ZPX060	ZPX075	ZPX100
Part Number		ZPX050	ZPX060	ZPX075	ZPX100
Gauge		50	60	75	100
Minimum Use Temperature		-50 °C	-50 °C	-50 °C	-50 °C
Maximum Storage Temperature (2 year max)		32 °C	32 °C	32 °C	32 °C
Shrink Air Temperature (°C)		121 °C - 176 °C	121 °C - 176 °C	121 °C - 176 °C	121 °C - 176 °C
Density (g/cm ³) at 23°C	D1505	0.925	0.925	0.925	0.925
Haze %	D1003	2.5	2.5	2.8	3.0
Gloss %	D2457	88	89	90	90
Instrumented Impact Strength (kgs.)	D3763	14	19	23	33
Coefficient of Friction (film to film, kinetic)	D1894	0.3	0.3	0.3	0.3
Water Vapor Transmission Rate (gms / 100 sq. in. / 24 hrs.)	F1249	2.0	1.5	1.2	0.9
Oxygen Transmission Rate (cc / m ² / 24 hrs.)	D3985	9000	8500	7500	5900
		MD/TD	MD/TD	MD/TD	MD/TD
Tensile Strength (Mpa)	D882	19500 / 16500	19500 / 16500	19500 / 16500	19500 / 16500
Elongation at Break (%)	D882	110 / 130	110 / 130	110 / 130	110 / 130
Shrinkage % (130°C, 30 sec)	D2732	79 / 83	79 / 83	79 / 83	79 / 83
Maximum Storage Temperature & Shelf Life	D1938	32°C or 90°F, 2 years without opening			
Storage Conditions	Store in a clean, dry place at room temperature. Avoid direct sunlight, and extreme temperature and humidity.				

MD = Machine Direction / TD = Transverse Direction

Important Notice

The above listed information is based on calculations and tests we believe to be reliable. However, the accuracy and completeness are not guaranteed. Before using, user shall determine the suitability of the product for its own use and assumes all risk and liability related to the product. The seller limits its obligations to replacement or at its option, reimbursement of the purchase price of products shown to the seller's satisfaction to have been defective at the time the seller sold it.

RELOC ZIPPIT® POLY BAGS

RECLOSABLE POLY BAGS

2 mil Reloc Zippit® Reclosable Poly Bags

Product Number	Size (W x L)	Weight	Pieces/Box
R1.5-1.5	1.5 X 1.5	1 lb	1000
R12	1.5 X 2	1 lb	1000
R22	2 X 2	1 lb	1000
R23	2 X 3	2 lbs	1000
R24	2 X 4	2 lbs	1000
R25	2 X 5	2 lbs	1000
R28	2 X 8	3 lbs	1000
R29	2 X 9	3 lbs	1000
R212	2 X 12	4 lbs	1000
R33	3 X 3	2 lbs	1000
R34	3 X 4	3 lbs	1000
R35	3 X 5	3 lbs	1000
R36	3 X 6	4 lbs	1000
R312	3 X 12	6 lbs	1000
R44	4 X 4	4 lbs	1000
R45	4 X 5	5 lbs	1000
R46	4 X 6	5 lbs	1000
R47	4 X 7	5 lbs	1000
R48	4 X 8	6 lbs	1000
R410	4 X 10	8 lbs	1000
R55	5 X 5	5 lbs	1000
R56	5 X 6	6 lbs	1000
R57	5 X 7	7 lbs	1000
R58	5 X 8	7 lbs	1000
R510	5 X 10	9 lbs	1000
R512	5 X 12	11 lbs	1000
R64	6 X 4	5 lbs	1000
R66	6 X 6	7 lbs	1000
R68	6 X 8	9 lbs	1000
R69	6 X 9	10 lbs	1000
R610	6 X 10	11 lbs	1000
R612	6 X 12	13 lbs	1000
R77	7 X 7	9 lbs	1000
R78	7 X 8	9 lbs	1000
R710	7 X 10	12 lbs	1000
R88	8 X 8	12 lbs	1000
R810	8 X 10	15 lbs	1000
R812	8 X 12	17 lbs	1000
R912	9 X 12	18 lbs	1000
R1010	10 X 10	18 lbs	1000
R1012	10 X 12	21 lbs	1000
R1013	10 X 13	23 lbs	1000
R1212	12 X 12	25 lbs	1000
R1215	12 X 15	31 lbs	1000
R1315	13 X 15	34 lbs	1000
R1318	13 X 18	38 lbs	1000
R1420	14 X 20	22 lbs	500
R1824	18 X 24	17 lbs	250
R2020	20 X 20	30 lbs	500

The Reloc Zippit® brand is a preferred product offering the total package, peace of mind and unsurpassed value. Our products are the perfect fit for a wide variety of industries and applications. From custom sizing to detailed printing, QSPAC is focused on leading the way in creative and innovative solutions.

Features:

- Robust White Line zipper is easy to open yet keeps your product securely inside
- Excellent performance time after time
- DispenserBag provides neat storage and serves one bag at a time
- Color coded packaging offers effortless product identification
- Custom printing and sizes available
- Standard packaging - 100 pieces/DispenserBag
- 10 DispenserBag/box
- New lighter master cartons are easy and safe to handle



2 mil Reloc Zippit® Reclosable Poly Bags with White Block

Product Number	Size (W x L)	Weight	Pieces/Box
WR22	2 X 2	1 lb	1000
WR23	2 X 3	2 lbs	1000
WR34	3 X 4	2 lbs	1000
WR35	3 X 5	2 lbs	1000
WR44	4 X 4	4 lbs	1000
WR46	4 X 6	5 lbs	1000
WR48	4 X 8	6 lbs	1000
WR58	5 X 8	7 lbs	1000
WR68	6 X 8	9 lbs	1000
WR69	6 X 9	10 lbs	1000
WR810	8 X 10	15 lbs	1000
WR912	9 X 12	18 lbs	1000
WR1012	10 X 12	21 lbs	1000
WR1013	10 X 13	23 lbs	1000
WR1215	12 X 15	31 lbs	1000
WR1315	13 X 15	34 lbs	1000

RELOC ZIPPIT® POLY BAGS

RECLOSABLE POLY BAGS

4 mil Reloc Zippit® Reclosable Poly Bags

Product Number	Size (W x L)	Weight	Pieces/Box
4R23	2 X 3	3 lbs	1000
4R2.5-3	2.5 X 3	4 lbs	1000
4R33	3 X 3	4 lbs	1000
4R34	3 X 4	5 lbs	1000
4R35	3 X 5	6 lbs	1000
4R44	4 X 4	6 lbs	1000
4R46	4 X 6	9 lbs	1000
4R48	4 X 8	12 lbs	1000
4R58	5 X 8	14 lbs	1000
4R64	6 X 4	14 lbs	1000
4R66	6 X 6	14 lbs	1000
4R68	6 X 8	17 lbs	1000
4R69	6 X 9	20 lbs	1000
4R610	6 X 10	22 lbs	1000
4R612	6 X 12	22 lbs	1000
4R88	8 X 8	23 lbs	1000
4R810	8 X 10	29 lbs	1000
4R912	9 X 12	38 lbs	500
4R1010	10 X 10	36 lbs	1000
4R1012	10 X 12	42 lbs	500
4R1013	10 X 13	46 lbs	500
4R1212	12 X 12	50 lbs	500
4R1215	12 X 15	30 lbs	500
4R1315	13 X 15	40 lbs	500
4R1318	13 X 18	40 lbs	500
4R1410	14 X 10	24 lbs	500
4R1424	14 X 24	26 lbs	250
4R1620	16 X 20	24 lbs	250
4R1820	18 X 20	27 lbs	250
4R1824	18 X 24	33 lbs	250
4R2020	20 X 20	30 lbs	250
4R2424	24 X 24	44 lbs	200

4 mil Reloc Zippit® Reclosable Poly Bags with White Block

Product Number	Size (W x L)	Weight	Pieces/Box
4WR23	2 X 3	3 lbs	1000
4WR2.5-3	2.5 X 3	4 lbs	1000
4WR34	3 X 4	5 lbs	1000
4WR35	3 X 5	6 lbs	1000
4WR46	4 X 6	9 lbs	1000
4WR58	5 X 8	14 lbs	1000
4WR69	6 X 9	20 lbs	1000
4WR810	8 X 10	29 lbs	1000
4WR912	9 X 12	38 lbs	500
4WR1013	10 X 13	46 lbs	500
4WR1215	12 X 15	30 lbs	500
4WR1318	13 X 18	40 lbs	500

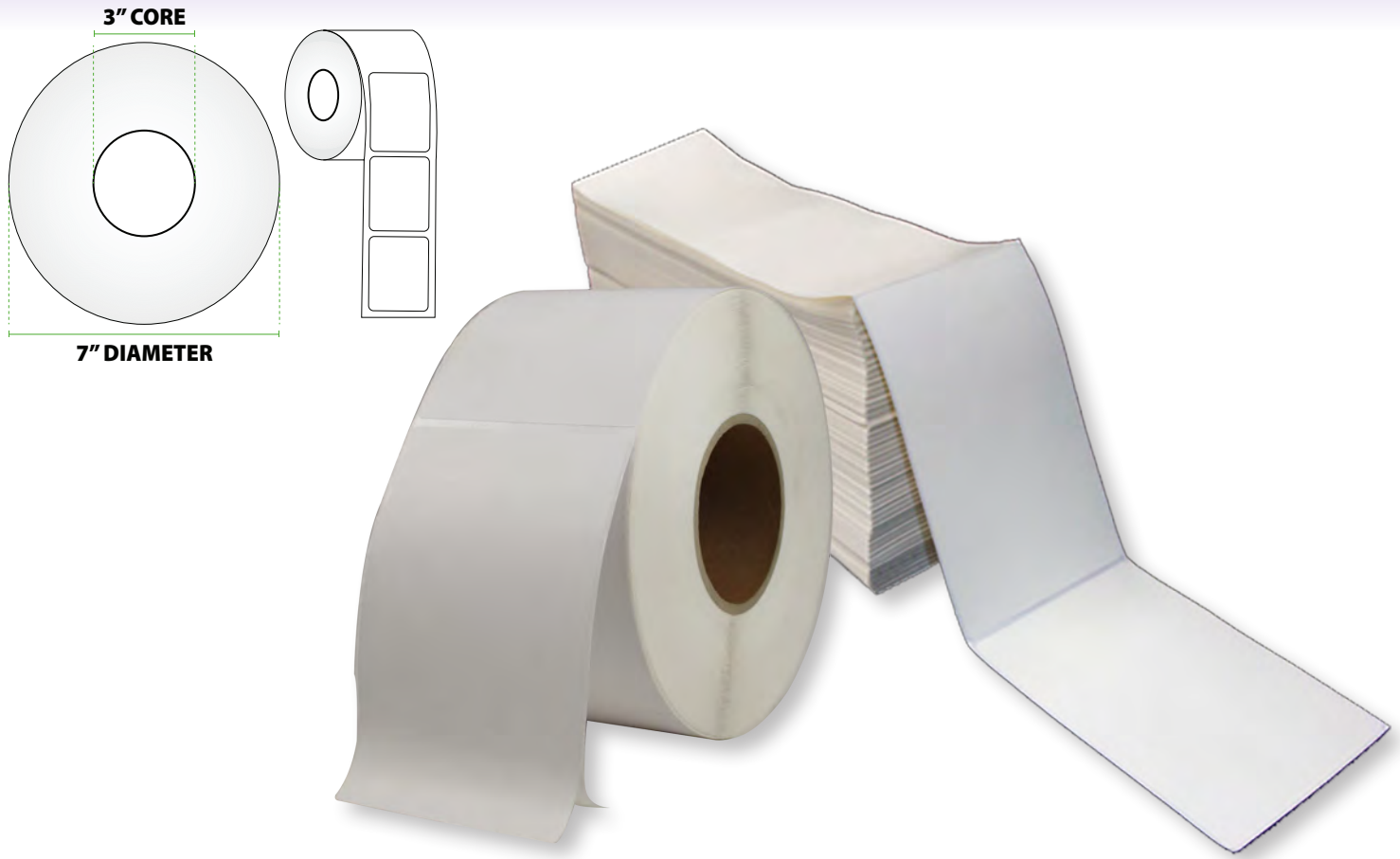
6 mil Reloc Zippit® Reclosable Poly Bags

Product Number	Size (W x L)	Weight	Pieces/Box
6R46	4 X 6	12 lbs	1000
6R58	5 X 8	20 lbs	1000
6R69	6 X 9	25 lbs	1000
6R810	8 X 10	36 lbs	1000
6R912	9 X 12	46 lbs	500
6R1012	10 X 12	26 lbs	500
6R1013	10 X 13	30 lbs	500
6R1212	12 X 12	31 lbs	500
6R1215	12 X 15	39 lbs	250
6R1318	13 X 18	49 lbs	250



LABELS

THERMAL TRANSFER & DIRECT THERMAL LABELS



- Sold in case quantity only
- All label sizes are perforated (roll and fan-fold)
- Ultra smooth specially coated paper with permanent adhesive
- Use as shipping, product identification, bar code labels and more

Typical Properties (Roll):

Product Number	Size (H x W)	Labels per Roll	Rolls per Case	Cases per Pallet	Type
TTL-0402	4" x 2"	3000	4	75	Thermal Transfer
TTL-0403	4" x 3"	2000	4	75	Thermal Transfer
TTL-0406	4" x 6"	1000	4	75	Thermal Transfer
TDL-0402	4" x 2"	3000	4	75	Direct Thermal
TDL-0403	4" x 3"	2000	4	75	Direct Thermal
TDL-0406	4" x 6"	1000	4	75	Direct Thermal

Typical Properties (Fan-Fold):

Product Number	Size (H x W)	Labels per Stack	Stacks per Case	Cases per Pallet	Type
TTF-0406	4" x 6"	2000	2	75	Thermal Transfer
TDF-0406	4" x 6"	2000	2	75	Direct Thermal



TZ-DLR15
3" x 5"



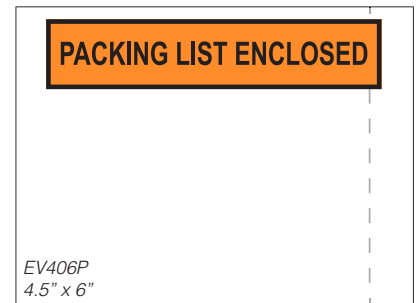
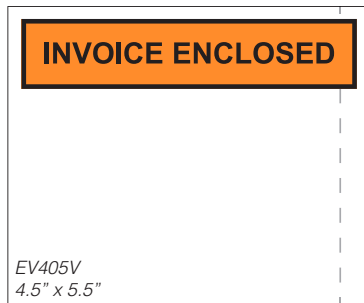
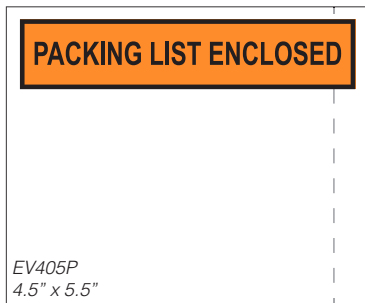
TZ-DS-5947
3" x 5"

- Stocked labels.
- 500 labels per roll.
- Call attention to your shipments with these labels.
- Quality gloss pressure sensitive labels.
- Lends a professional appearance to your important shipments.

PACKING LIST ENVELOPES

TOP & SIDE LOADING

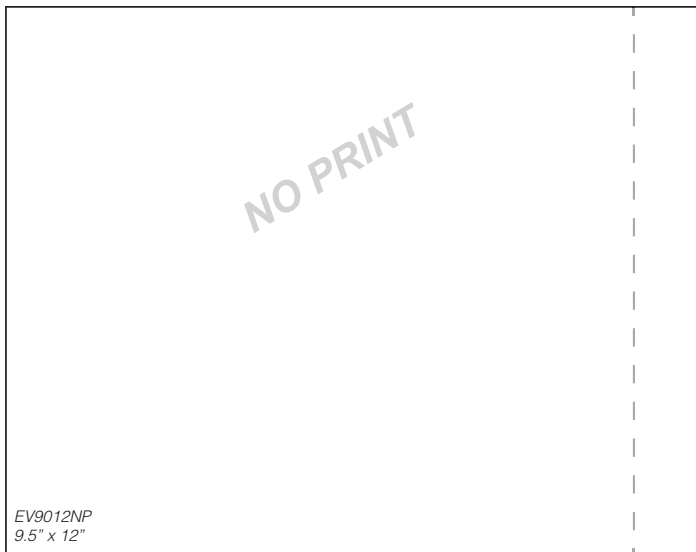
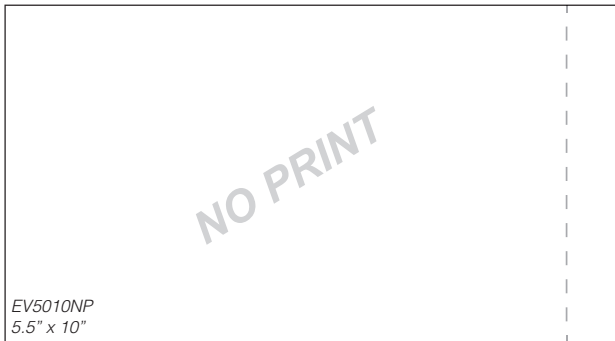
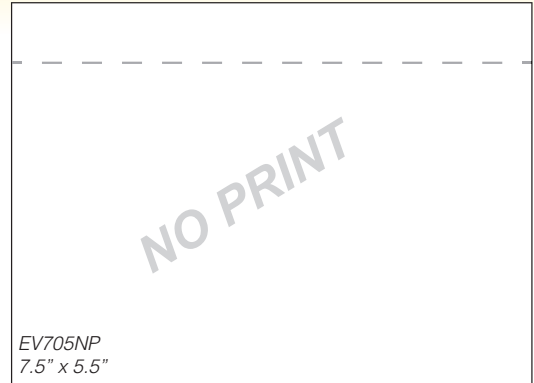
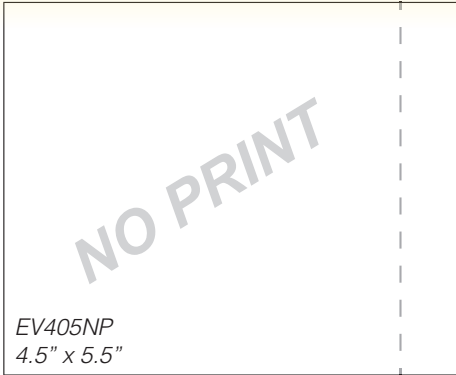
- Contains pressure-sensitive backing that secures to nearly every surface
- Outside dimensions of envelope are listed
- Top and side loading envelopes
- Waterproof envelope protects the documents inside



Product Number	Description	Loading Location	Outside Size	Case Weight	Quantity/Case
EV-405P	Packing List Enclosed	Side	4 ½ in x 5 ½ in	7 lbs	1000
EV-405V	Invoice Enclosed	Side	4 ½ in x 5 ½ in	7 lbs	1000
EV-405NP	No Print	Side	4 ½ in x 5 ½ in	7 lbs	1000
EV-406P	Packing List Enclosed	Side	4 ½ in x 6 in	7 lbs	1000
EV-705P	Packing List Enclosed	Top	7 ½ in x 5 ½ in	11 lbs	1000
EV-705NP	No Print	Top	7 ½ in x 5 ½ in	11 lbs	1000
EV-5010P	Packing List Enclosed	Side	5 ½ in x 10 in	14 lbs	1000
EV-5010NP	No Print	Side	5 ½ in x 10 in	14 lbs	1000
EV-9012NP	No Print	Side	9 ½ in x 12 in	15 lbs	500
EV-7010NP	No Print	Side	7 in x 10 in	15 lbs	1000
EV-1006PF	No Print	Top (with perforation on bottom)	10 ¾ in x 6 ¾ in	15 lbs	500

PACKING LIST ENVELOPES

TOP & SIDE LOADING



STRAPPING TOOLS

POLY STRAPPING



Product Number	Size	Units/Case
QPC-300C-1 / 2	1/2 in	20
QPC-300C-5 / 8	5/8 in	20

- Crimper for 1/2 in. & 5/8 in. PP Strapping
- 13 in. handle



Product Number	Size	Units/Case
QPC-301C-1 / 2	1/2 in	12
QPC-301C-5 / 8	5/8 in	12
QPC-301C-3 / 4	3/4 in	12

- Crimper for 1/2 in., 5/8 in., & 3/4 in. PP Strapping
- 17 in. handle



Product Number	Size	Units/Case
QPC-117	3/8 in ~ 3/4 in	20

- Regular Duty Tensioner
- Fits 3/8 in. to 3/4 in. PP & PET Strapping



Product Number	Size	Units/Case
QPC-105HD	3/8 in ~ 3/4 in	20

- * Heavy Duty Tensioner
- * Heavy Steel Construction
- * Fits 3/8" to 3/4" PP & PET Strapping

STEEL STRAPPING



Product Number	Size	Units/Case
QPC-310C-1 / 2	1/2 in	20
QPC-310C-5 / 8	5/8 in	20
QPC-310C-3 / 4	3/4 in	20

- Crimper for 1/2 in., 5/8 in., & 3/4 in. Steel Strapping



Product Number	Size	Units/Case
QPC-305	3/8 in ~ 3/4 in	30

- Steel Strapping Cutter
- Fits 3/8 in. to 3/4 in. Steel Strapping
- For thickness up to 0.035 in.



Product Number	Size	Units/Case
QPC-307	3/8 in ~ 3/4 in	30

- Heavy Duty Steel Strapping Cutter
- Fits 3/8 in. to 1 1/4 in. Steel Strapping
- For thickness up to 0.035 in.



Product Number	Size	Units/Case
QPC-800S	3/8 in ~ 3/4 in	12

- Steel Strapping Tensioner
- Fits 3/8 in. to 3/4 in. Steel Strapping
- For thickness up to 0.035 in.

KNIVES & BLADES

UTILITY KNIVES & CARTON SIZER

Product Number	Units/Case
QPC-501	12/inner 144/carton

- Supreme duty
- Replacement Blade P-506B



Product Number	Units/Case
P-506B	10

- Replacement Blade QPC-501

Product Number	Units/Case
QPC-502	12/inner 144/carton

- Medium duty
- Replacement Blade P-506B



Product Number	Units/Case
P-506B	10

- Replacement Blade QPC-502

Product Number	Units/Case
QPC-503	100/inner 2500/carton

- Lightweight
- Replacement Blade P-503B



Product Number	Units/Case
P-503B	10

- Replacement Blade QPC-503

Product Number	Units/Case
QPC-504	12/inner 600/carton

- Excellent for opening box
- Great choice for promotional give-away with imprinted logo
- Replacement Blade P-504B

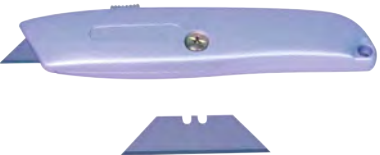


Product Number	Units/Case
P-504B	100

- Replacement Blade QPC-504

Product Number	Units/Case
QPC-505	12/inner 144/carton

- Heavy Steel Construction
- Replacement Blade P-505B



Product Number	Units/Case
P-505B	100

- Replacement Blade QPC-505

Product Number	Units/Case
QPC-737	24

- Carton Sizer
- With measuring guide



IMPULSE SEALERS

TABLE TOP HEAT SEALERS

Product Number	Size	Units/Case	Unit Weight
QPC-415-04	4 in	12	4 lbs
QPC-415-08	8 in	6	8 lbs
QPC-415-12	12 in	6	10 lbs
QPC-415-16	16 in	4	12 lbs
QPC-415-20	20 in	4	14 lbs

Heat Sealer Service Kits

Product Number	Size	Units/Case
P-04-SK	4 in	1
P-08-SK	8 in	1
P-12-SK	12 in	1
P-16-SK	16 in	1
P-20-SK	20 in	1

- Seal PE & PP bags
- Service kit & replacement parts available
- 2mm seal width (4", 8", 12"); 2.5mm seal width (16", 20")
- Sealing and resealing bags and pouches
- Quality construction
- Low power consumption
- Easy portability
- Useful in wide range of industries
- One upper teflon
- One lower teflon
- Two flat wire elements



TABLE TOP HEAT SEALERS WITH BAG CUTTER

Product Number	Size	Units/Case	Unit Weight
QPC-415-08C	8 in	6	10 lbs
QPC-415-12C	12 in	6	11 lbs
QPC-415-16C	16 in	4	13 lbs
QPC-415-20C	20 in	4	15 lbs

Heat Sealer with Bag Cutter Service Kits

Product Number	Size	Units/Case
P-08C-SK	8 in	1
P-12C-SK	12 in	1
P-16C-SK	16 in	1
P-20C-SK	20 in	1

- Seal PE & PP bags
- Service kit & replacement parts available
- 2mm seal width (4", 8", 12"); 2.5mm seal width (16", 20")
- Sealing and resealing bags and pouches
- Quality construction
- Low power consumption
- Easy portability
- Useful in wide range of industries
- One upper teflon
- One lower teflon
- Two flat wire elements
- One cutting blade



FOOT OPERATED IMPULSE SEALER

Product Number	Size	Units/Case	Case Weight
QPC-415-12F	12 in	1	46 lbs
QPC-415-18F	18 in	1	47 lbs
QPC-415-24F	24 in	1	48 lbs

Foot Operated Impulse Sealer Service Kits

Product Number	Size	Units/Case
P-12F-SK	12 in	1
P-18F-SK	18 in	1
P-24F-SK	24 in	1

- Adjustable work table & stand
- Ideal for large volume sealing projects
- 2.5mm seal width
- Hands free
- Analog temperature control
- Service kit & replacement parts available
- One 10 in. upper teflon
- One lower teflon
- Two flat wire elements



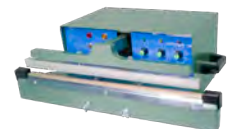
SEMI-AUTOMATIC IMPULSE SEALER

Product Number	Size	Units/Case	Case Weight
QPC-415-18A	18 in	1	60 lbs
QPC-415-24A	24 in	1	64 lbs

Semi-Automatic Impulse Sealer Service Kits

Product Number	Size	Units/Case
P-18A-SK	18 in	1
P-24A-SK	24 in	1

- Sit on table
- Can be controlled manually
- 2mm seal width
- Fuse protected
- Handles portability
- Analog heat/cool and cycle timer
- Foot pedal operated
- Analog wait timer before making another seal
- Service kit & replacement parts available
- One 10 in. upper teflon
- One lower teflon
- Two flat wire elements



NOTES



Sticking With The Best

PRODUCT LISTING

15020 Marquardt Avenue • Santa Fe Springs • CA • 90670
Phone 562-407-3868 • www.QSPAC.com



CARTON SEALING TAPE

- ACRYLIC - HAND AND MACHINE TAPE
- ACRYLIC - COLORS - HAND AND MACHINE TAPE
- ACRYLIC - STOCK PRINTED - HAND AND MACHINE TAPE
- HOT MELT - HAND AND MACHINE TAPE
- NATURAL RUBBER
- WATER ACTIVATED PAPER TAPE
- FLATBACK PAPER TAPE
- LABEL PROTECTION TAPE
- STATIONERY TAPE
- SECURITY TAPE

CUSTOM PRINTED TAPES

- ACRYLIC TAPE
- HOT MELT TAPE
- WATER ACTIVATED PAPER TAPE
- PVC

INDUSTRIAL TAPE

- MASKING TAPE
- PAINTER'S MASKING TAPE
- FILAMENT TAPE
- STRAPPING TAPE
- DUCT TAPE
- PRODUCE BAG SEALING TAPE
- DOUBLE SIDED TAPES

STRETCH FILM

- HAND FILM (CLEAR AND COLORS)
- MACHINE FILM (CLEAR AND COLORS)
- EXTENDED CORE FILM
- BANDING FILM
- PRE-STRETCHED HAND FILM
- DISPENSERS AND CUTTER

DISPENSERS & TOOLS

- HAND DISPENSERS
- MASKING AND FILAMENT HAND DISPENSERS
- TABLE TOP AND MULTI-ROLL DISPENSERS
- PHOENIX WATER ACTIVATED TAPE DISPENSERS
- IMPULSE SEALERS
- LABEL PROTECTION TAPE DISPENSERS
- PRODUCE TAPE BAG SEALERS
- UTILITY KNIVES AND BLADES
- CARTON SIZER
- POLY AND STEEL STRAPPING HAND TOOLS

PACKING LIST ENVELOPES

- PACKING LIST ENCLOSED
- CLEAR (NO PRINT)
- INVOICE ENCLOSED

RECLOSEABLE POLY BAGS

- CLEAR AND WHITE BLOCK
- 2 MIL, 4 MIL, AND 6 MIL

SHRINK FILM

- CROSS LINKED POLYOLEFIN SHRINK FILM

LABELS

- THERMAL TRANSFER
- DIRECT THERMAL
- FRAGILE



Quality • Service • People • Accountability • Communication

QSPAC INDUSTRIES, INC.

15020 Marquardt Avenue • Santa Fe Springs • CA • 90670

Phone: (877) 407-7722 • (562) 407-3868 • Fax: (562) 407-3871 • www.QSPAC.com