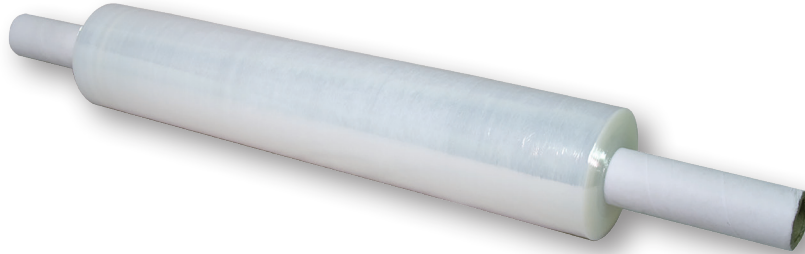


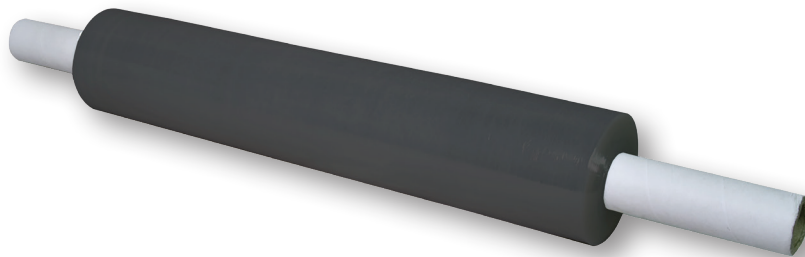


EXTENDED CORE HAND WRAP AND BANDINGS



Extended Core Clear Cast Hand Films

Product #	Size	Rolls/Case	Net Case Weight
SF204710H	20" x 1000' - 12 Micron (47 gauge)	4 rolls/case	15.04 lbs
SF208010H	20" x 1000' - 80 gauge	4 rolls/case	25.20 lbs
SF201207H	20" x 700' - 120 gauge	4 rolls/case	26.52 lbs



Extended Core Black Opaque Hand Films

Product #	Size	Rolls/Case	Net Case Weight
SF208010HBK	20" x 1000' - 80 gauge (Black)	4 rolls/case	25.20 lbs

Banding Cast Films - 3" Core Diameter



Product #	Size	Rolls/Case	Net Case Weight
SF038010	3" x 1000' - 80 gauge	18 rolls/case	17.28 lbs
SF054710	5" x 1000' - 12 Micron (47 gauge)	12 rolls/case	11.28 lbs
SF058010	5" x 1000' - 80 gauge	12 rolls/case	19.20 lbs
SF031207	3" x 700' - 120 gauge	18 rolls/case	18.14 lbs
SF051207	5" x 700' - 120 gauge	12 rolls/case	20.16 lbs

Banding Cast Films - 1 1/2" Core Diameter

Product #	Size	Rolls/Case	Net Case Weight
SF058010H	5" x 1000' - 80 gauge	12 rolls/case	19.20 lbs
SF058010H-15	5" x 1000' - 80 gauge	15 rolls/case	24.00 lbs

