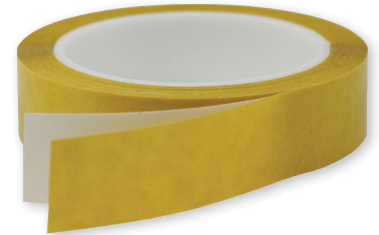


Double Sided Tape

INDUSTRIAL TAPE

- The set of products presented covers most common applications that call for a double-sided tape, either general purpose or demanding industrial.
- All the items are with solvent-based acrylic adhesive for the superior longevity, weather resistance, clarity and balanced performance, except DC610 and DC612 with rubber adhesive
- Applications: fixing, holding, splicing, lamination, mounting, and component assembly
- Markets: Packaging, Converting, Rubber/Molding Extrusion, Corrugated Paperboard Processing, Insulation and Gasket Fabrication, Electronic and Electrical Assembly
- Great values in cost, short lead time, technical support and the factory backup for your specific applications
- Custom converting available in slitting, die cutting and lamination



Product Information

Product Number	Carrier	Thickness mil / inch	Color	Liner	Adhesion oz/in	Applications
Transfer (DR)						
DR12C	None	2.0	Clear	White Paper	54	General Purpose (Comparable to 3M 927)
Tissue (DS)						
DS13L	Tissue	3.6	Translucent	White Paper	47	General Purpose
DS24B	Tissue	4.0	Black	White Paper	40	Industrial lamination, assembly
DS24L	Tissue	4.0	Translucent	White Paper	40	Industrial, corrugated splicing
DS25L	Tissue	5.1	Translucent	White Paper	47	High temperature resistance (Comparable to tesa 50658)
DS36L	Tissue	6.3	Translucent	White Paper	57	Overall superior performance (Comparable to Nitto 500)
Film (DL)						
DL13C	Polyester	3.6	Clear	White Paper	43	General Purpose
DL35C	Polyester	5.0	Clear	Mustard Glassine	50	Industrial Performance (Comparable to tesa 4928)
DL48C	Polyester	8.0	Clear	Red MOPP	65	High Temp. Superior Performance (Comparable to tesa 4965)
DL49W	UPVC	9.0	White	Mustard Glassine	65	High Temp. Superior Performance (Comparable to tesa 4970)
Foam (DF)						
DF2AW	PE Foam	1/32	White	White Paper	72	Mounting, Sealing, Cushioning
DF2BW	PE Foam	1/16	White	White Paper	72	Mounting, Sealing, Cushioning
DF2CW	PE Foam	1/8	White	White Paper	72	Mounting, Sealing, Cushioning

Product Information

Product Number	Carrier	Thickness mil	Color	Liner	Adhesion oz/in	Applications
Paper (DC)						
DC610	Flatback	5.0	Natural	White Glassine	42	General purpose
DC612	Flatback	7.0	Natural	White Glassine	56	Golf grip installation. Picture mounting.

CARRIERS

The **carrier** is the reinforcing flexible material that is coated with the adhesive on both sides, such as tissue, film, foam or other. If there is no carrier, the double-sided tape is called a transfer tape, a special kind. The carrier imparts important physical properties in applications.

Transfer Tape

The transfer tape is found preferable in many foam laminations, mounting and component assembly applications, due to its extreme pliability. While with an ATG tape situation, it's the most convenient way to apply a double-sided tape.

Tissue

A double-sided tissue tape is versatile, hand tear-able, easy to apply, conformable, and economical. It is widely used around the world for lamination, splicing, holding and component assembly. With different adhesive systems, this group of products would cover most of the applications commonly seen in various industries.

Film

A double-sided film tape provides extra tensile strength, in contrast to a double-sided tissue, and at the same time it could be very thin, and easy to handle.

Foam

A double-sided foam tape provides certain cushioning for the two surfaces being bonded. This cushioning effect is normally required for bonding two rigid surfaces together, in order to offset any surface irregularity or texture. Therefore, sometimes it is called a mounting tape.

Paper

Paper is much denser, thicker and stronger than tissue, and lying flat. With selected and controlled adhesive coating, these tapes are great for certain holding applications.

