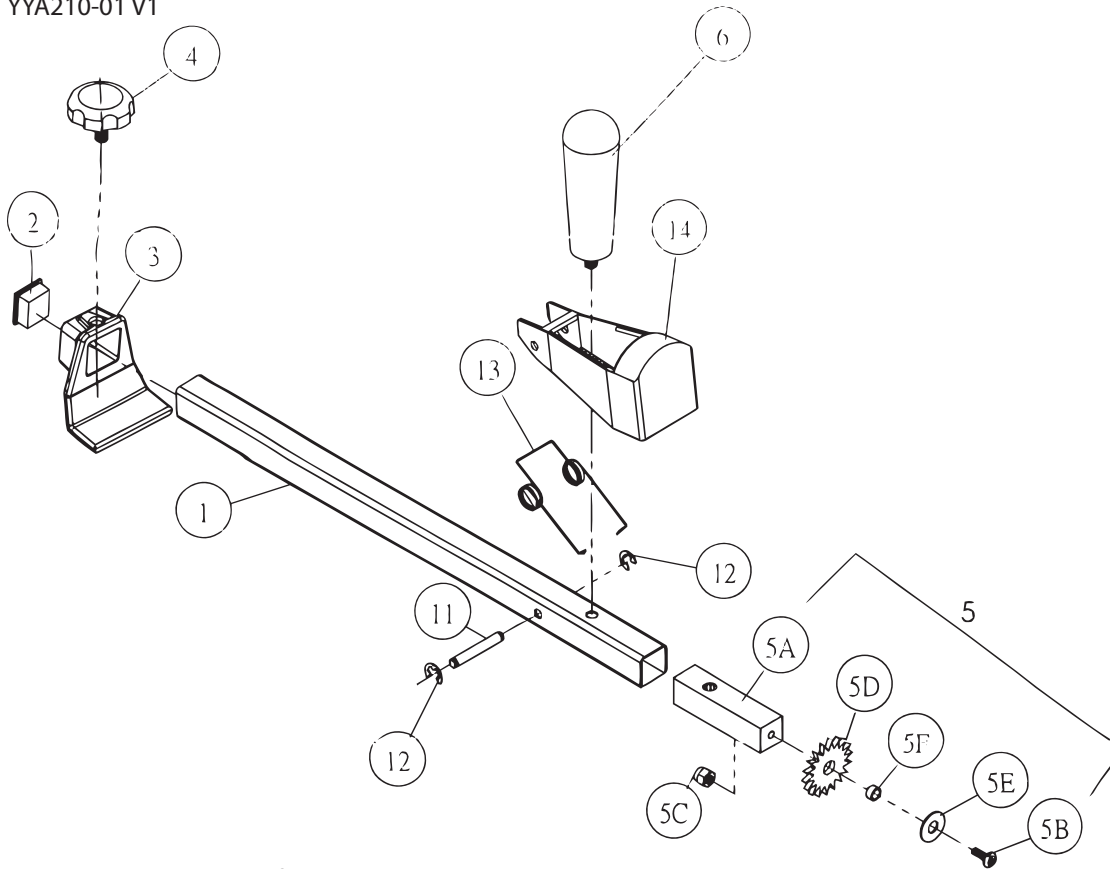


CARTON SIZER (CARTON-REDUCER)

YYA210-01 V1



Assembly Instructions for Carton Sizer

- Step 1: Slide washer (5E), cushion (5F) and blade (5D) over screw (5B) in such order
- Step 2: Thread above assembly into square shaft (5A). Slide square shaft into tube (1) lining up pilot holes on tube (1) and square shaft assembly (5). Screw handle (6) into these holes until snug.
- Step 3: Slide aluminum hook (3) over tube (1), make sure hook is opposite side of tube as handle (6). Thread pivot screw (4) into hole on aluminum hook (3).
- Step 4: Snap plastic cover (2) into place on tube (1). Your carton sizer is now assembled.

Directions for Use

With top of box open, place carton sizer with handle to the inside of box and the aluminum hook on the outside set hook on lip of the box. Using pivot screw (4) adjust sizer to desired depth. With one hand on the handle and the other on top of the tube, score your way around the box to your desired height.

Part No.	Part Name	Quantity/Tool	Part Number	Part Name	Quantity/Tool
01	Tube	1	05E	Washer	1
02	Plastic Cover	1	05F	Cushion	1
03	Aluminum Hook	1	06	Handle	1
04	Pivot Screw	1	11	Pin	1
05A	Square Shaft	1	12	Clip	2
05B	Screw	1	13	Spring	1
05C	Nut	1	14	Blade Cover	1
05D	Blade	1			